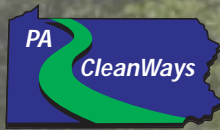


**APPENDIX B**  
**PA CLEANWAYS REPORT**

# PA CleanWays Illegal Dump Survey Final Report Butler County 2007



Empowering people to eliminate illegal dumping and littering in Pennsylvania.





**Empowering people to eliminate  
illegal dumping and littering  
in Pennsylvania.**

Since 1990, PA CleanWays has been dedicated to empowering people to eliminate illegal dumping and littering. Through the coordinated efforts of more than 30,000 PA CleanWays cleanup volunteers, over 9,000 tons of trash and 95,000 tires have been removed from illegal dumpsites in Pennsylvania and properly disposed. Through special collection events sponsored by PA CleanWays chapters and affiliates, an additional 224,000 tires and 22,000 appliances have been properly disposed. Our experience indicates that local involvement, partnerships, and support are vital to lasting success in addressing illegal dumping and littering.

**PA CleanWays**

105 West Fourth Street, Greensburg, PA 15601  
Phone: 724-836-4121 • Toll Free: 877-772-3673  
Fax: 724-836-1980 • [www.pacleanways.org](http://www.pacleanways.org)

## **EXECUTIVE SUMMARY**

PA CleanWays is a nonprofit organization that empowers people to eliminate illegal dumping and littering in Pennsylvania through various education and environmental programs. PA CleanWays' illegal dump surveys educate state, county, and local officials about the problem of illegal dumping and provide valuable data about the dumpsites and the community in which they reside to address the problem through cleanups, municipal waste collections, and recycling programs.

Illegal dumpsite identification was completed by driving roads and contacting various constituent groups such as municipal offices and community services, state agencies, and environmental and conservation groups in the area. Limitations of the survey process included poor visibility in high growth areas, and surveyors not accessing private lands, or high crime/high risk areas. Due to these limitations, it is likely that there were additional dumpsites not accounted for in this report.

There were 217 dumpsites identified, containing 316.25 tons of trash. Ninety-nine percent of the sites were determined to be active, and 88% of the sites were located in a rural area. Of 57 municipalities in Butler County, 21 municipalities (37%) have mandatory trash collection. Forty-five municipalities (79%) have a curbside recycling program within their community. Butler County has drop off recycling twice a year for special collections. Thirty-five municipalities (61%) have illegal dumping activity. Forty sites (18%) were located in municipalities without a curbside recycling program.

Seventy-two percent of the surveyed sites were in the vicinity of some sort of waterway or body of water, while 16% had waste materials directly in the waterway itself. Hard-to-dispose of items, such as tires, appliances, and other bulky waste items were the most common waste type in the identified dumpsites. Recyclables, including steel, bi-metallic and aluminum cans, glass, plastic bottles, newspaper, magazines, and cardboard were also found, usually mixed with other materials.

## TABLE OF CONTENTS

<b>EXECUTIVE SUMMARY .....</b>	<b>i</b>
<b>BACKGROUND .....</b>	<b>1</b>
<b>PURPOSE OF ILLEGAL DUMP SURVEYS .....</b>	<b>1</b>
<b>IMPACTS OF ILLEGAL DUMPING.....</b>	<b>1</b>
<b>SURVEY METHOD.....</b>	<b>2</b>
<b>DEFINITION OF AN ILLEGAL DUMPSITE.....</b>	<b>2</b>
<b>SITE IDENTIFICATION AND ASSESSMENT.....</b>	<b>3</b>
<b>LIMITATIONS .....</b>	<b>3</b>
<b>BUTLER COUNTY ILLEGAL DUMPSITE SURVEY AREA AND RESULTS.....</b>	<b>3</b>
<b>SURVEY AREA.....</b>	<b>3</b>
<b>SITE CHARACTERISTICS.....</b>	<b>4</b>
<b>IMPACTS ON WATERWAYS .....</b>	<b>5</b>
<b>WASTE CHARACTERISTICS .....</b>	<b>5</b>
<b>POSSIBLE CAUSES AND SOLUTIONS .....</b>	<b>5</b>
<b>POSSIBLE CAUSES.....</b>	<b>5</b>
<b>POSSIBLE SOLUTIONS.....</b>	<b>6</b>
<b>SUMMARY .....</b>	<b>7</b>
<b>ATTACHMENTS</b>	
<b>#1 Butler County Illegal Dumpsites and Municipalities Map</b>	
<b>#2 Butler County Illegal Dumpsites and Population Density Map</b>	
<b>#3 Butler County Illegal Dumpsites and Environmental Features Map</b>	
<b>#4 Illegal Dumpsite and Trash Collection by Municipality</b>	
<b>#5 Illegal Dumpsite Survey Site Characteristics by Municipality</b>	
<b>#6 Illegal Dumpsite Survey Waste Characteristics by Municipality</b>	
<b>#7 Illegal Dumpsite Survey Summary Chart by County</b>	

## **BACKGROUND**

PA CleanWays is a nonprofit organization that empowers people to eliminate illegal dumping and littering in Pennsylvania. Since 1990, PA CleanWays has helped people who are ready to take action against these destructive problems. By partnering with county and local officials, concerned residents, and community organizations, tangible results can be seen within a community through:

- organization of illegal dump and litter cleanups,
- adoption of local areas,
- prevention of future dumping by the watchful eyes of volunteer monitors,
- placement of physical deterrents, and
- enforcement action when needed.

PA CleanWays educates the public about proper waste disposal, recycling, and practical alternatives to dumping and littering through the dissemination of literature, presentations, and coordination of collection events for hard-to-dispose of items.

## **PURPOSE OF ILLEGAL DUMP SURVEYS**

The purpose of the illegal dump survey was to assess and document as many illegal dumpsites as possible within the county. Illegal dumping mostly occurs in remote and secluded places, rural areas where few persons live and the roads are less traveled. However, for many people who are residents of an urban area, an illegal dump is within a one-mile radius of their home. Illegal dumping, within an urban context, has its own set of unique characteristics. Overall, very few people are aware of the widespread problem of illegal dumping.

The first step in developing an action plan against illegal dumping in a community is to determine the extent of the illegal dumping problem. Once sites are identified, assessed, and mapped, the data gathered can be used to:

- show that a problem does indeed exist,
- prioritize the sites and areas for cleanup and abatement,
- document problem materials within the dumpsites and develop plans for proper disposal, and
- provide a benchmark to measure cleanup progress.

The survey is also a tool that can be used for planning purposes within the community. It can provide valuable insight into development of solid waste and recycling programs. It can be used to gain support for funding for public awareness programs and education, as well as to generate funds to clean the existing dumpsites.

## **IMPACTS OF ILLEGAL DUMPING**

Illegal dumping poses a direct threat to the health and safety of humans and animals. Illegal dumping attracts disease-spreading rodents and mosquitoes by giving them a place to live and breed. West Nile Virus, carried by mosquitoes, has been a primary concern for environmental

officials. Illegal dumps also can be a source of physical injury for humans and animals due to broken glass, rusty metals, and toxic substances.

Recently, a new threat has been added to illegal dumping. Methamphetamine labs, used to produce the illegal drug crystal meth, are becoming more and more common. The materials used to make the illegal drug are tossed along the roadsides in illegal dumps and are extremely toxic.

Environmentally, illegal dumping pollutes our soil, surface, and groundwater supplies, as well as the air we breathe if a site catches on fire. The emissions released by the burning plastics and household hazardous waste can be extremely toxic. It is also aesthetically displeasing, and ruins the beauty of natural areas, including many public places such as community parks and state forests, parks, and game lands.

Economically, illegal dumps are expensive to clean up. Government agencies spend millions annually on cleanup efforts. The estimated cost to clean up a site can be anywhere from \$600 to over \$1,000 per ton for clean up and removal.<sup>1</sup>

Illegal dumpsites can also impact property values, can be a liability for property owners, and affect property purchases and transfers. Tourism revenue can also be affected by illegal dumps, which project to tourists that trash is not a concern of the community or the persons living there.

Illegal dumping also has social impacts on an area. When illegal dumping in neighborhoods and communities becomes status quo, quality of life is impacted and low-level property crime often increases.<sup>2</sup> This is what is referred to as the “broken window theory” developed originally by James Q. Wilson and George Kelling. The “broken window theory” suggests that neighborhood strategies help to deter and reduce crime by the fast clean up of illegally dumped items, litter and spilled garbage, and by the prompt removal of disposed of items.<sup>3</sup>

## **SURVEY METHOD**

### **Definition of an Illegal Dumpsite**

One of the primary goals of an illegal dump survey is to ultimately address the trash in our communities; therefore, the following were considered illegal dumpsites and included in the survey:

- Areas of concentrated trash,
- Areas of scattered trash that:
  - are not considered roadside litter (bottles, fast food wrappers, cans, etc.)
  - appear to have new trash thrown on them occasionally (more than twice a year)

---

<sup>1</sup>PA CleanWays averaged cost from multiple cleanups throughout 2004 & 2005.

<sup>2</sup> Wilson, James Q., Kelling, George L., “Broken Windows”, *Atlantic Monthly*, March 1982.

<sup>3</sup> Henry G. Cisneros, “Defensible Space: Detering Crime and Building Community”, January 1995

- appear to have new trash thrown on them occasionally, but cleanup maintenance is prevalent to prevent accumulation
- Areas containing only piles of yard waste (grass, leaves, branches, trees, etc.). These sites can often attract the dumping of other materials and can grow into major dumpsites, and,
- Areas containing isolated or solitary items, such as 1 or 2 appliances or tires that may or may not be dumped on in the future.

### **Site Identification and Assessment**

PA CleanWays has learned through its experiences that, to effectively identify illegal dumpsites in an area, it is necessary to physically travel the roadways. By focusing on high probability areas for dump locations such as pull-offs, roads with hillsides, etc., efficient surveying can be done on large areas within a short amount of time.

Preliminary data gathering was conducted by sending a letter to every municipality within the county concerning the survey project. The letters detailed the survey purpose and plan, and asked for known illegal dumpsites to be reported back to us. Letters were also sent to environmental groups interested in conservation of this area, as well as to state agencies such as the Pennsylvania Department of Environmental Protection, Pennsylvania Department of Conservation and Natural Resources, the Pennsylvania Game Commission, and the Pennsylvania Fish and Boat Commission. Follow up phone calls were made to each municipality prior to beginning assessments in its area.

Once an illegal dumpsite was located, characteristics about the site itself were recorded and documented on standard forms (a copy of the Illegal Dump Survey Assessment Form and Instruction Sheet are available by contacting PA CleanWays). In some cases, pictures were also taken of the illegal dumpsites to further document the problem. GPS coordinates were recorded for each site in order to produce illegal dumpsite maps within the county based on municipalities, population density, and environmental features (see Attachments 1, 2, 3).

### **Limitations**

The primary limitation with road surveys is that they only permit discovery of sites visible from the public right-of-way, therefore, only those sites were assessed by PA CleanWays. PA CleanWays did not enter private property to assess sites. It can be presumed that there are significant numbers of illegal dumpsites out of sight on private property with limited access. Because safety considerations were a priority for this project, areas were not assessed in high crime/risk areas. Most surveying began after the foliage had thinned in the fall and visibility improved, however, some site assessments were limited due to high vegetation and snowfall.

## **BUTLER COUNTY ILLEGAL DUMPSITE SURVEY AREA AND RESULTS**

### **Survey Area**

Butler County encompasses 788 square miles and is located in the western part of Pennsylvania. The county is bordered by Beaver, Lawrence, Mercer, Venango, Clarion, Armstrong, Westmoreland, and Allegheny counties. It is comprised of 57 municipalities. The county has five major watersheds within its boundaries; The Slippery Rock Creek Watershed,



the Buffalo Creek Watershed, the Redbank Creek Watershed, the Sandy Creek Watershed, and the Lower Allegheny River Watershed.

According to the Census Bureau, the 2000 census recorded the population to be 174,083. The median household income is \$42,308. The per capita income is \$20,794. Nine percent of individuals are below poverty status, while 6% of families are below poverty status. Both are lower than the national average of 12% for individuals and 9% for families. The percent of high school graduates or higher is 86.8%, which is higher than the state average of 81.9%.

Butler County was formed in 1800, from part of Allegheny County, and Named for General Richard Butler. Butler, the county seat, was settled in 1793. Butler is recognized as the birthplace of the Jeep, built by the American Bantam Car Company in 1940. Beginning in the spring, Butler County offers many outdoor activities, many of them being water-based such as canoeing, sailing, power boating, and waterslides. There are many miles of water recreation due to the Clarion and Allegheny Rivers, Moraine State Park's Lake Arthur, as well as the 300-acre Curwensville Dam. Jennings Environmental Education Center, also located in Butler County, is one of several state parks specifically dedicated to provide environmental education and interpretation to the community. Butler County also has areas for hiking, horseback riding, camping, hunting, and fishing. Many historical festivals and fairs are held throughout the year, including the Portersville Steam Show, the Butler Farm Show, the Big Butler Fair, and Penn's Colony Festivals. In the winter, sleigh rides, cross-country skiing, snowmobiling, ice fishing, and Christmas specialty shops are the attractions.

Manufacturing is Butler County's major industry, employing over 12,500 in 2004. Butler County is also home to Slippery Rock University, one of the largest college campuses in Western Pennsylvania, which also houses on its campus the main office of the Pennsylvania Environmental Education Center(PCEE). PCEE was established by Executive order in 1996 to promote environmental education and work to empower Pennsylvania's citizens to individually and collectively exercise environmental stewardship.

In Pennsylvania, municipal solid waste (msw) includes municipal waste, sewage sludge, construction and demolition waste, asbestos, and ash. In Butler County, 21 municipalities (37%) were noted as requiring trash collection, while 45 municipalities (79%) have a curbside recycling program within their community. Butler County has drop off recycling twice a year for special collections. Thirty-five municipalities (61%) have illegal dumping activity. Eighteen percent were located in municipalities without a curbside recycling program. (See Attachment 4). In 2004, according to the Pennsylvania Department of Environmental Protection, Butler County reported a total of 175,162.7 tons of municipal solid waste generated. Of that total, 26,827.8 tons were recycled giving Butler County a 15% recycling rate. The county has an msw generation rate of 0.87 tons per person per year. The national average is 0.8 tons per person per year.

### **Site Characteristics**

Butler County surveys resulted in the identification of 217 illegal dumpsites totaling more than 316.25 tons of trash. The sites ranged in size from approximately .5 tons to 11 tons of waste. A chart of Site Characteristics by Municipality can be found as Attachment 5 of this report.

Of the 217 dump sites, 88% were in rural areas. Most of the terrain of Butler County is relatively hilly. Hillsides provide illegal dumpers with a convenient place for easy unloading. Of the sites, 99% were considered to be a continuous problem where dumping occurs routinely. Only 11 sites (5%) had “No Dumping” signs present, however, all 11 sites were active. Signs, although effective in some areas, often send a message that this is a “safe” place to dump. In other county surveys, the presence of signs resulted in the identification of sites that were not visible from the road. Concerning visibility, 60% of the sites were visible or partly visible from the road. This fact lends itself to the theory that illegally dumped trash will attract more trash.

### **Impacts on Waterways**

The impacts of illegal dumping on wetlands and waterways in Butler County are significant. Of all the illegal dumpsites, those posing the most direct and obvious threat to the environment were those located in or near waterways. Seventy-two percent of the surveyed sites were in the vicinity of some sort of waterway or body of water. Thirty-five of those sites had waste materials directly in the waterway itself (see Attachment 5). It should, however, be noted that all illegal dumps contaminate our water supply.

### **Waste Characteristics**

Butler County illegal dumpsites contained a variety of waste types. In some areas, the common presence of a waste type may indicate the need for a refuse/recycling program for that particular material. Eighteen percent of the dumpsites were located in a municipality without a curbside recycling program. Although there was a variety of refuse found in the illegal dumps, tires, appliances, and other bulky waste items were the most common waste type identified. Recyclables were also commonly found while surveying. Recyclables are defined as steel, bi-metallic and aluminum cans, glass, plastic bottles, newspaper, magazines, and cardboard. These were usually mixed with other materials. A chart of the Waste Characteristics by Municipality can be found as Attachment 6, as well as a chart showing Illegal Dumpsite Characteristics Summary by County as Attachment 7 of this report.

## **POSSIBLE CAUSES AND SOLUTIONS**

Illegal dumping occurs in every county of the state. There are a multitude of reasons and excuses why people dump: the cost or inconvenience of proper disposal; the lack of, or frustration in, finding proper disposal options; lack of public education; profit making; the result of other criminal activity or malicious mischief.

### **Possible Causes**

- Municipal curbside trash collection is unavailable  
Because it is not mandated by the state, trash collection options are dependent on the city or municipal government. Communities that depend on private subscription for waste collection services have reported greater dumping problems. Inherent inefficiencies and associated higher costs exist in almost all private subscription systems because trucks must travel long distances between customers.<sup>4</sup>

---

<sup>4</sup> PA CleanWays and PROP, “Factors Influencing Illegal Dumping in Pennsylvania Communities”, Spring 2001

- Recycling programs are unavailable or inconvenient  
Act 101 dictates that all communities over 10,000 people and densely populated municipalities between 5,000 and 10,000 have recycling programs. Curbside recycling communities have reported a lower incidence of residential waste accumulation problems and a slightly lower incidence of dumping problems.<sup>5</sup>
- Disposal of Construction and Demolition debris (C&D)  
C&D debris is a serious solid waste management issue because of the amount that is generated each year. C&D debris is often found in illegal dumps and creates a compounded problem because some of the materials may be hazardous, such as wood that has been chemically treated or painted with lead based paint, asbestos containing insulation, or shingles.
- Shortage of enforcement  
Unfortunately, many communities cannot devote people and resources to effectively deal with illegal dumping. As a result, dumpers do not fear prosecution, thus have no reason to stop their habits.
- Education  
Illegal dumping has been a learned habit for many. Prior to anti – dumping laws, it was common practice to use open town dumps, burn or bury trash, or dump in a convenient out of the way area. Today we know the harmful effects from illegal dumping. Education is key to diminish the habits learned and teach the public proper and safe disposal practices.
- Minimal funding opportunities  
Funds are needed to organize cleanups, educate the public, enforce regulations, and cover other associated project costs. Because of limited funding for cleanups and abatement activities, these kinds of events can be difficult to coordinate.

### **Possible Solutions**

- Organize a cleanup  
Cleanups are an effective way to combat littering and illegal dumping. Cleanups help to build ownership, restore community pride, and send a message that dumping will no longer be tolerated.
- Organize a special collection event  
Special one-day collection events are worthwhile. These special collection opportunities are very effective when routinely offered, such as each spring or fall as a community cleanup day, but are also successful when offered as community resources permit. These special collections commonly target hard-to-dispose of materials such as tires, appliances, scrap metal, computers,

---

<sup>5</sup> PA CleanWays and PROP, “Factors Influencing Illegal Dumping in Pennsylvania Communities”, Spring 2001

electronics, and household hazardous waste. Most of these items account for what is found in illegal dumps.

- Physical deterrents  
The placing of guard rails or mounds of dirt at pull-off areas, as well as the planting of trees, can help provide a barrier that will limit accessibility to a site for future dumping.
- Site monitoring and maintenance  
It is important to monitor a site after an area has been cleaned in order to watch for subsequent dumping or littering, to keep the site clean, and to report any incriminating evidence to the proper enforcement agency. Keeping the site clean makes it easier to spot new trash and discourages subsequent dumping, since trash attracts trash.

Enforcement, with site monitor support, effectively decreases the incidents of dumping and littering. When word gets out that dumping activity will not be tolerated and violators will be caught and prosecuted, dumping decreases.

- Community education  
Intentional illegal dumping and littering are social problems that require a shift in attitudes and practices. Education is the key to changing values, habits, and attitudes. Education programs should be tailored to inform the community and can take many forms such as: school/community presentations, press releases, radio and newspaper ads, and publications.
- Enforcement of existing laws  
Any improper disposal of trash is illegal and violators can be prosecuted. Numerous Pennsylvania agencies enforce laws addressing improper disposal of trash. The Pennsylvania General Assembly creates and enacts our littering and dumping laws.<sup>6</sup> County and municipal governments create and enact ordinances that are specific within their local boundaries.

## SUMMARY

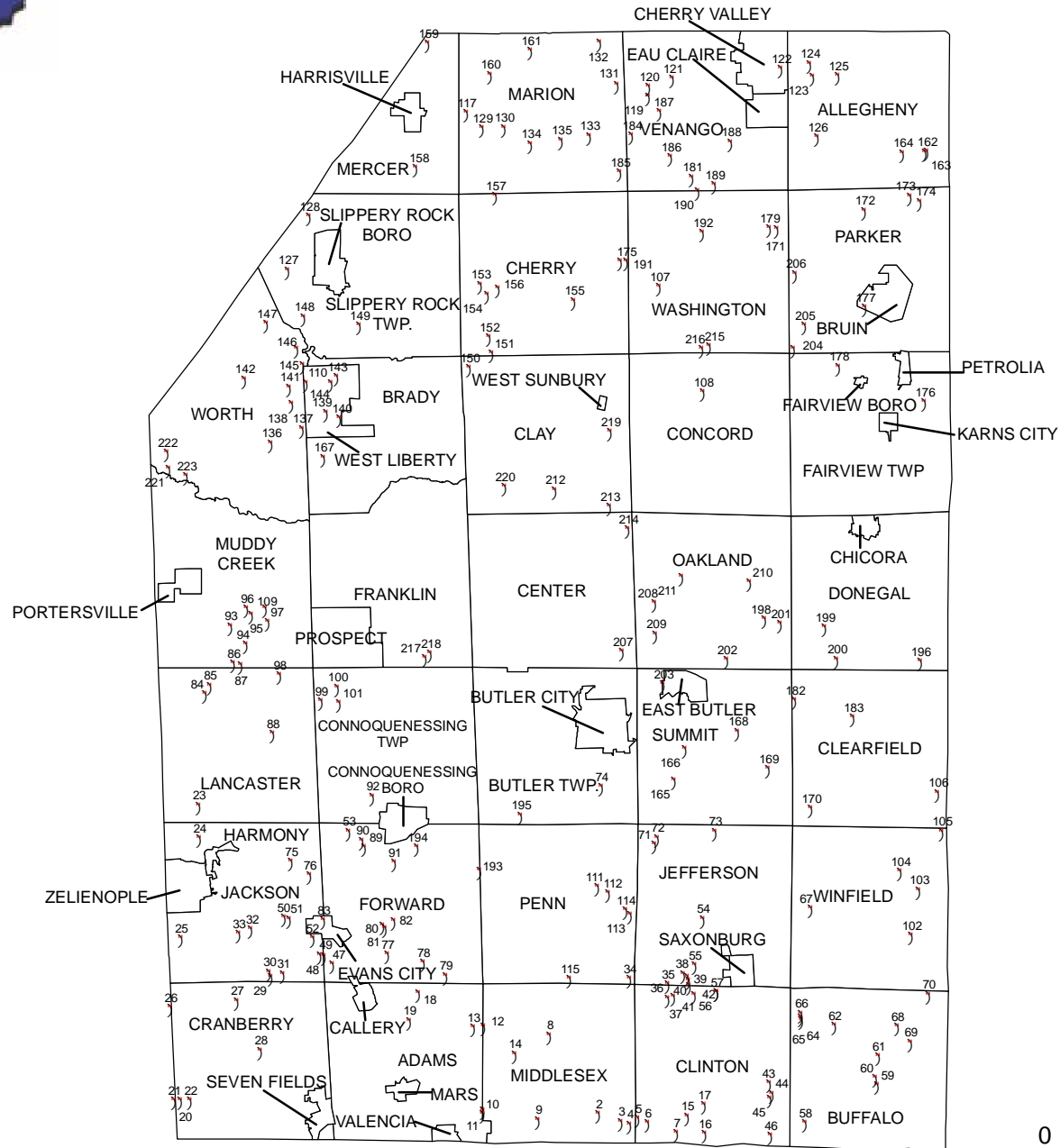
This survey accounted for 217 illegal dump sites in Butler County consisting of 316.25 tons of trash. This is not a comprehensive survey of the entire county as it is expected that there are many more illegal dumpsites on private lands, as well as ones on public lands that have gone undetected. However, the documentation and assessment of these 217 sites in Butler County are a strong step forward in the fight against illegal dumping in Pennsylvania. By providing the needed data to address the problem of illegal dumping, constituents can begin addressing the problem through public policy, resource allocation, community education, and cleanups.

---

<sup>6</sup> Read about the Pennsylvania Code at [www.pacode.com](http://www.pacode.com)

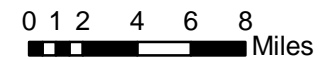
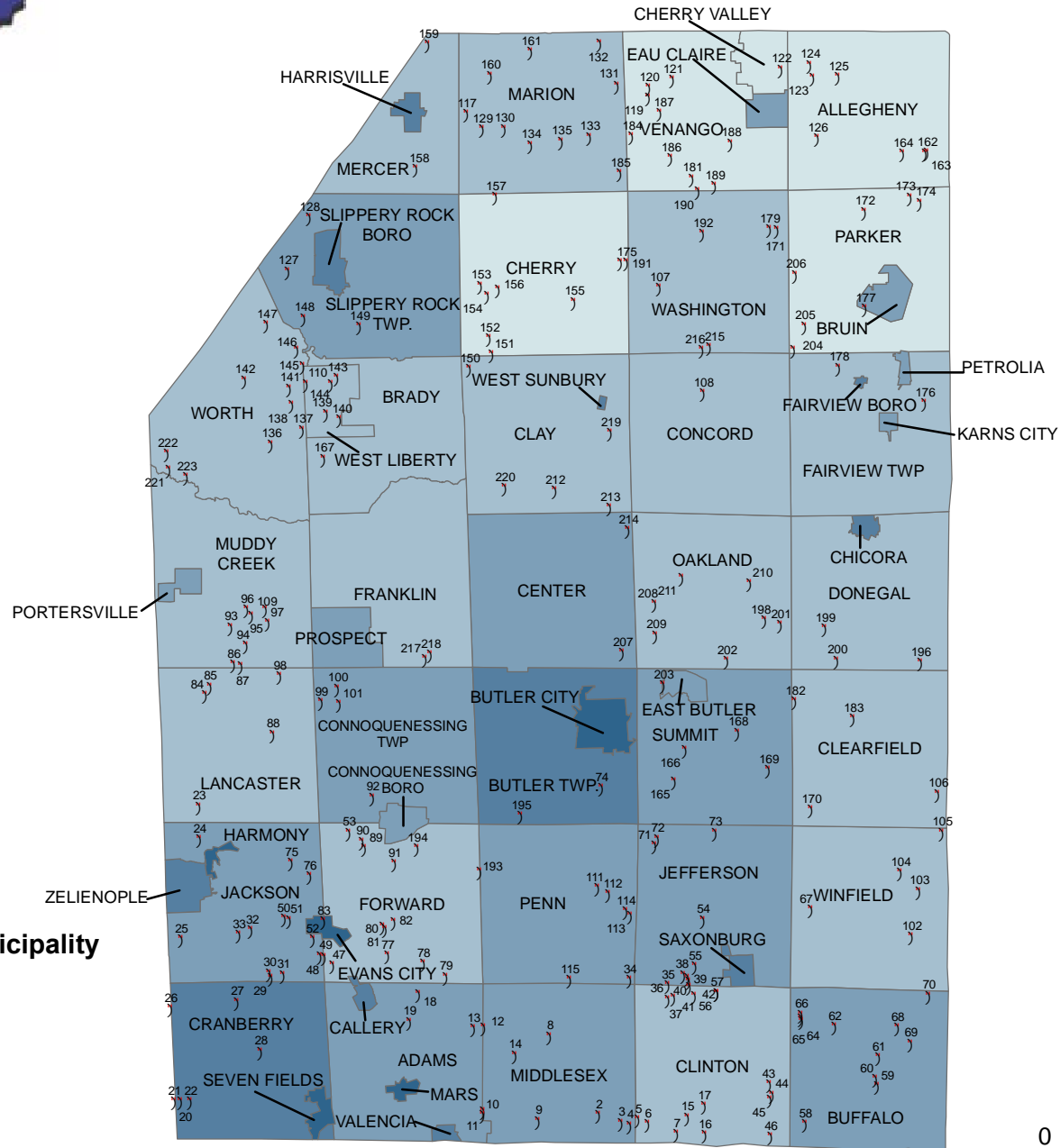


# Butler County, Pennsylvania Illegal Dumpsites and Municipalities March 2007





# Butler County, Pennsylvania Illegal Dumpsites and Population Density March 2007



**Population Density by Municipality**

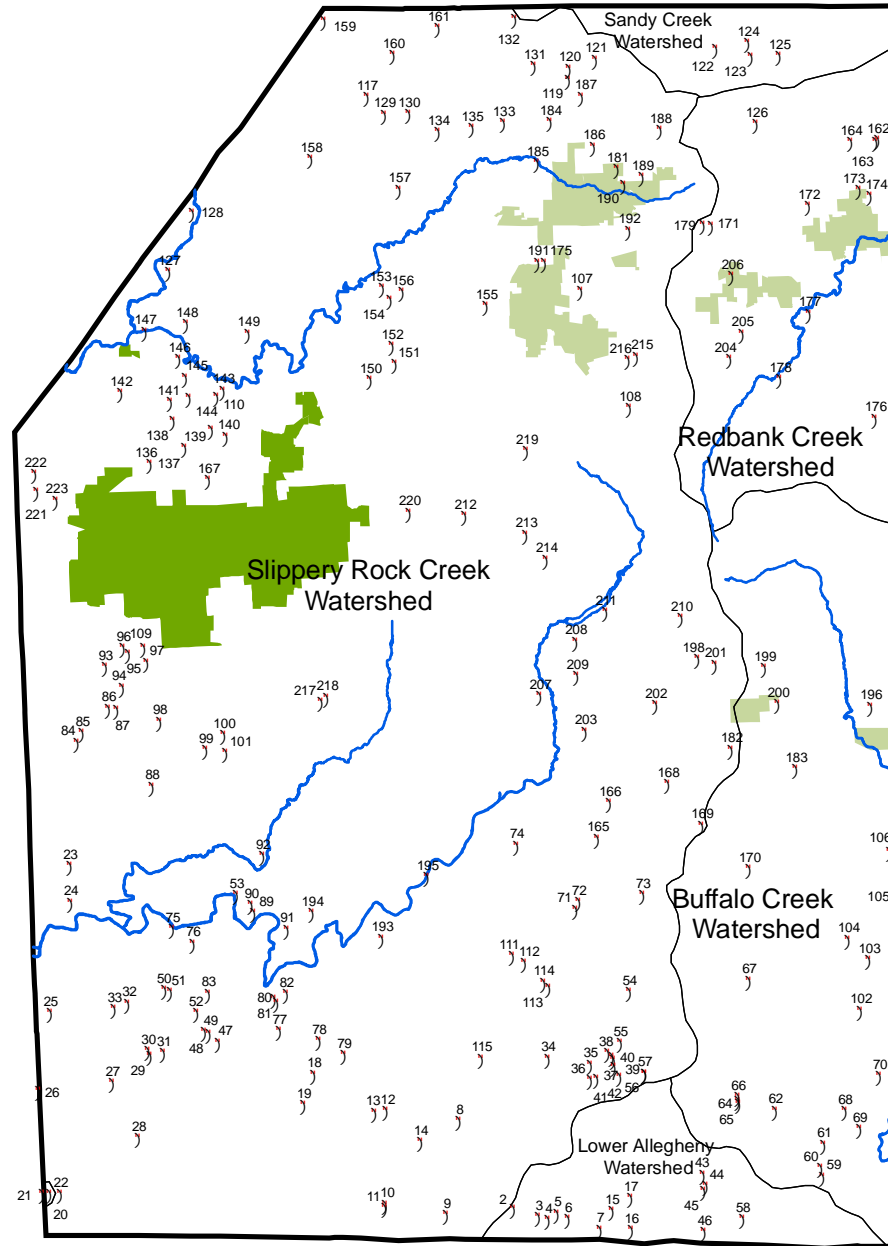
**People Per Square Mile**

- Less than 50 people
- 50.01 - 150 people
- 150.01 - 750 people
- 750.01 - 2,000 people
- 2,000.01 or more people

) Illegal Dumpsites, as of 3-11-07

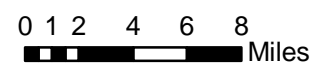


# Butler County, Pennsylvania Illegal Dumpsites and Environmental Features March 2007



### Environmental Features

- State Gamelands
- State Parks
- Watersheds
- Major Waterways
- Illegal Dumpsites, as of 3-11-07



© 2007 PA CleanWays  
Map Prepared by Andrew Aurand  
UCSUR, University of Pittsburgh



### Illegal Dumpsites and Trash Collection by Municipality\*

Municipality	Illegal Dumpsites	Calculated Tons	Trash Collection	Curbside Recycling	Drop Off Recycling
Adams Township	4	4.5	N	Y	N
Allegheny Township	7	17	N	N	N
Brady Township	1	0.5	N	Y	N
Bruin Borough	0	0	N	N	N
Buffalo Township	11	9.5	N	Y	N
Butler City	0	0	Y	Y	N
Butler Township	2	2.5	Y	Y	N
Callery Borough	0	0	Y	N	N
Center Township	2	1.5	N	Y	N
Cherry Township	5	14	N	N	N
Cherry Valley Borough	0	0	N	Y	N
Chicora Borough	0	0	N	Y	N
Clay Township	6	7.5	Y	Y	N
Clearfield Township	6	4.5	N	Y	N
Clinton Township	16	31	N	Y	N
Concord Township	1	0.5	N	Y	N
Connoquenessing Borough	0	0	N	Y	N
Connoquenessing Township	4	5	N	Y	N
Cranberry Township	6	7	Y	Y	N
Donegal Township	3	3	N	Y	N
East Butler Borough	0	0	Y	Y	N
Eau Claire Borough	0	0	N	Y	N
Evans City Borough	0	0	Y	Y	N
Fairview Borough	0	0	N	N	N
Fairview Township	3	4.5	N	Y	N
Forward Township	12	9	N	Y	N
Franklin Township	2	6	N	Y	N
Harmony Borough	0	0	Y	Y	N
Harrisville Borough	0	0	Y	Y	N
Jackson Township	16	25.5	N	Y	N
Jefferson Township	10	12	Y	Y	N
Karns City Borough	0	0	N	Y	N
Lancaster Township	5	9.5	N	N	N
Marion Township	10	23.5	Y	Y	N
Mars Borough	0	0	N	Y	N
Mercer Township	3	3	N	Y	N
Middlesex Township	9	9	N	Y	N
Muddy Creek Township	7	23.5	N	Y	N
Oakland Township	7	8	N	Y	N
Parker Township	7	9	N	N	N
Penn Township	7	7.5	Y	Y	N
Petrolia Borough	0	0	Y	N	N
Portersville Borough	0	0	N	Y	N
Prospect Borough	0	0	Y	Y	N
Saxonburg Borough	0	0	Y	Y	N
Seven Fields Borough	0	0	Y	Y	N
Slippery Rock Borough	0	0	Y	Y	N
Slippery Rock Township	4	3.75	Y	Y	N
Summit Township	6	4.5	N	Y	N
Valencia Borough	0	0	N	N	N
Venango Township	9	11.5	N	N	N



Municipality	Illegal Dumpsites	Calculated Tons	Trash Collection	Curbside Recycling	Drop Off Recycling
Washington Township	7	15	N	N	N
West Liberty Borough	3	3	N	Y	N
West Sunbury Borough	0	0	Y	N	N
Winfield Township	5	6.5	N	Y	N
Worth Township	12	14	Y	Y	N
Zelienople Borough	0	0	Y	Y	N

\*Quantities assessed at time of survey were estimates based on what was visible.

Sixty-one percent of Butler County's municipalities have illegal dumping activity.

Thirty-seven percent of Butler County's municipalities have mandatory trash collection.

Seventy-nine percent of Butler County's municipalities have a curbside recycling program.

Eighteen percent of the sites were located in municipalities without a curbside recycling program.

\*\*Information concerning mandatory trash collection, curbside recycling, and drop off recycling is deemed correct at time of printing and cannot be guaranteed due to changes in ordinances and funding in each individual municipality. Data was gathered through phone calls to each municipality, county solid waste specialists, county recycling coordinators, and data taken from DEP's Recycling Page Resources.

## Butler County IDS Site Characteristics by Municipality \*

Municipality	Site Name	Site Number	Calculated Tons	Demographics	Distance From Waterway	Visibility From Roadway	Road Type	Terrain	Active?
Adams Township	Dobson Road	0019	0.5	Rural	No Waterway Nearby	Partial	Municipal Road	Flat	Yes
Adams Township	List Hill Road	0013	1	Suburban	50-100 Feet	Partial	Municipal Road	Steep Slope	Yes
Adams Township	Three Degree Road	0011	2.5	Suburban	No Waterway Nearby	Yes	County Road	Gently Sloped	Yes
Adams Township	Union Church Road	0018	0.5	Rural	More than 100 Feet	Yes	County Road	Steep Slope	Yes
Allegheny Township	Division Road Ext. Site 1	0162	0.5	Rural	More than 100 Feet	Yes	Municipal Road	Gently Sloped	Yes
Allegheny Township	Division Road Ext. Site 2	0163	4	Rural	50-100 Feet	Yes	Municipal Road	Medium Slope	Yes
Allegheny Township	McKee Road Site 1	0123	2	Rural	No Waterway Nearby	Yes	Municipal Road	Gently Sloped	Yes
Allegheny Township	McKee Road Site 2	0124	1	Rural	50-100 Feet	Partial	Municipal Road	Medium Slope	Yes
Allegheny Township	Milford Road	0125	1	Rural	No Waterway Nearby	Yes	Municipal Road	Flat	Yes
Allegheny Township	Sertik Road	0164	7.5	Rural	No Waterway Nearby	Yes	Municipal Road	Gently Sloped	Yes
Allegheny Township	Slater Road	0126	1	Rural	No Waterway Nearby	Yes	Municipal Road	Medium Slope	Yes
Brady Township	Alexander Road	0140	0.5	Rural	In Waterway/Wetlands	No	Municipal Road	Medium Slope	Yes
Buffalo Township	Cabbage Road	0066	0.5	Rural	50-100 Feet	Partial	Municipal Road	Steep Slope	Yes
Buffalo Township	Coal Hollow Road Site 1	0062	2.5	Rural	More than 100 Feet	No	Municipal Road	Extremely Steep	Yes
Buffalo Township	Coal Hollow Road Site 2	0064	0.5	Rural	Within 50 Feet	Yes	Municipal Road	Gently Sloped	Yes
Buffalo Township	Coal Hollow Road Site 3	0065	0.5	Rural	In Waterway/Wetlands	Partial	Municipal Road	Medium Slope	Yes
Buffalo Township	Cole Road	0060	2.5	Rural	50-100 Feet	Yes	Municipal Road	Medium Slope	Yes
Buffalo Township	Kepple Road Site 1	0069	0.5	Rural	In Waterway/Wetlands	Partial	Municipal Road	Steep Slope	Yes
Buffalo Township	Kepple Road Site 2	0070	0.5	Rural	Within 50 Feet	Partial	Municipal Road	Medium Slope	Yes
Buffalo Township	Parker Road	0059	0.5	Suburban	No Waterway Nearby	Partial	Municipal Road	Medium Slope	Yes
Buffalo Township	Stepp Road	0068	0.5	Rural	50-100 Feet	Yes	Municipal Road	Medium Slope	Yes
Buffalo Township	Thompson Road	0058	0.5	Rural	No Waterway Nearby	Yes	Municipal Road	Medium Slope	Yes
Buffalo Township	Younkins Drive	0061	0.5	Rural	More than 100 Feet	Yes	Municipal Road	Steep Slope	Yes
Butler Township	McCalmont Road	0195	2	Rural	In Waterway/Wetlands	Yes	Municipal Road	Gently Sloped	Yes
Butler Township	North Crisswell	0074	0.5	Suburban	50-100 Feet	Yes	Municipal Road	Medium Slope	Yes
Center Township	Palmer Road	0207	0.5	Suburban	In Waterway/Wetlands	Yes	Municipal Road	Medium Slope	Yes

## Butler County IDS Site Characteristics by Municipality \*

Municipality	Site Name	Site Number	Calculated Tons	Demographics	Distance From Waterway	Visibility From Roadway	Road Type	Terrain	Active?
Center Township	Pine Tract Road	0214	1	Rural	More than 100 Feet	Partial	Municipal Road	Medium Slope	Yes
Cherry Township	Coaltown Road	0154	5	Rural	No Waterway Nearby	Partial	Municipal Road	Medium Slope	Yes
Cherry Township	Hungarian Road	0152	1.5	Rural	No Waterway Nearby	Yes	Municipal Road	Gently Sloped	Yes
Cherry Township	New Hope Road	0157	0.5	Rural	No Waterway Nearby	Yes	Municipal Road	Flat	Yes
Cherry Township	Redbrush Road Site 1	0155	2.5	Rural	No Waterway Nearby	Partial	Municipal Road	Medium Slope	Yes
Cherry Township	Redbrush Road Site 2	0156	4	Rural	No Waterway Nearby	Yes	Municipal Road	Gently Sloped	Yes
Cherry Township	Sangia Road	0153	0.5	Rural	More than 100 Feet	Yes	Municipal Road	Gently Sloped	Yes
Clay Township	Halston Road	0150	2.5	Rural	50-100 Feet	Yes	Municipal Road	Flat	Yes
Clay Township	Hungarian Rd/Grossman Rd	0151	2	Rural	No Waterway Nearby	Yes	Municipal Road	Flat	Yes
Clay Township	Jackson Road	0213	0.5	Rural	50-100 Feet	Partial	Municipal Road	Medium Slope	Yes
Clay Township	Mahood Road	0212	0.5	Rural	More than 100 Feet	Partial	Municipal Road	Gently Sloped	Yes
Clay Township	Shroyer Mill Road	0220	1	Rural	In Waterway/Wetlands	Yes	Municipal Road	Flat	Yes
Clay Township	Vidic Road	0219	1	Rural	More than 100 Feet	Yes	Municipal Road	Flat	Yes
Clearfield Township	Burke Road	0106	1	Rural	More than 100 Feet	Yes	Municipal Road	Gently Sloped	Yes
Clearfield Township	Long Run Road	0105	1	Rural	In Waterway/Wetlands	No	Municipal Road	Steep Slope	Yes
Clearfield Township	McGrady Hollow Road Site 1	0182	0.5	Rural	Within 50 Feet	Yes	Municipal Road	Medium Slope	Yes
Clearfield Township	McGrady Hollow Road Site 2	0183	1	Rural	More than 100 Feet	Yes	Municipal Road	Medium Slope	Yes
Clearfield Township	Russel Road	0107	0.5	Rural	More than 100 Feet	Partial	Municipal Road	Steep Slope	Yes
Clearfield Township	Schiebel Road	0170	0.5	Rural	50-100 Feet	Yes	Municipal Road	Gently Sloped	Yes
Clinton Township	Cannon Hill Road	0006	2.5	Rural	In Waterway/Wetlands	Partial	Municipal Road	Gently Sloped	Yes
Clinton Township	Cherry Valley Road Site 1	0005	0.5	Rural	50-100 Feet	Partial	Municipal Road	Medium Slope	Yes
Clinton Township	Cherry Valley Road Site 2	0016	3	Rural	50-100 Feet	Yes	Municipal Road	Medium Slope	Yes
Clinton Township	Christy Road	0007	10	Rural	More than 100 Feet	Partial	Municipal Road	Medium Slope	Yes
Clinton Township	Goldscheitter Road	0046	2	Rural	In Waterway/Wetlands	Partial	Municipal Road	Steep Slope	Yes
Clinton Township	Hidden Hill Road	0043	1.5	Rural	In Waterway/Wetlands	Yes	Municipal Road	Medium Slope	Yes
Clinton Township	Knoch School Road	0057	2.5	Suburban	No Waterway Nearby	Yes	Municipal Road	Flat	Yes

## Butler County IDS Site Characteristics by Municipality \*

Municipality	Site Name	Site Number	Calculated Tons	Demographics	Distance From Waterway	Visibility From Roadway	Road Type	Terrain	Active?
Clinton Township	Saxonburg Blvd	0017	2.5	Rural	More than 100 Feet	Yes	State Road	Gently Sloped	Yes
Clinton Township	Spring Valley Road	0036	1	Rural	Within 50 Feet	Yes	Municipal Road	Steep Slope	Yes
Clinton Township	Stark Road Site 1	0044	1.5	Rural	50-100 Feet	Yes	Municipal Road	Steep Slope	Yes
Clinton Township	Stark Road Site 2	0045	0.5	Rural	No Waterway Nearby	Yes	Municipal Road	Gently Sloped	Yes
Clinton Township	Tower Road Site 1	0041	1	Rural	In Waterway/Wetlands	Yes	Municipal Road	Gently Sloped	Yes
Clinton Township	Tower Road Site 2	0042	0.5	Rural	Within 50 Feet	Yes	Municipal Road	Medium Slope	Yes
Clinton Township	Victory Road Site 1	0035	0.5	Rural	In Waterway/Wetlands	Yes	Municipal Road	Medium Slope	Yes
Clinton Township	Victory Road Site 2	0037	1	Rural	More than 100 Feet	Yes	Municipal Road	Medium Slope	Yes
Clinton Township	Wiley Road	0015	0.5	Rural	More than 100 Feet	Partial	Municipal Road	Steep Slope	Yes
Concord Township	Bell Road	0216	0.5	Rural	More than 100 Feet	Yes	Municipal Road	Gently Sloped	Yes
Connoquenessing Township	Crab Run Road	0099	0.5	Rural	In Waterway/Wetlands	Partial	Municipal Road	Medium Slope	Yes
Connoquenessing Township	Harmony Road	0101	1.5	Rural	Within 50 Feet	Yes	Municipal Road	Medium Slope	Yes
Connoquenessing Township	Welsh Road	0092	2.5	Rural	Within 50 Feet	Partial	Municipal Road	Steep Slope	No
Connoquenessing Township	Whitestown Road Ext.	0100	0.5	Rural	No Waterway Nearby	Yes	Municipal Road	Gently Sloped	Yes
Cranberry Township	Darlington Road Site 1	0020	1	Suburban	In Waterway/Wetlands	Yes	Municipal Road	Medium Slope	Yes
Cranberry Township	Darlington Road Site 2	0021	1	Suburban	In Waterway/Wetlands	Yes	Municipal Road	Steep Slope	Yes
Cranberry Township	Glenrape Road	0026	1	Suburban	No Waterway Nearby	Yes	Municipal Road	Flat	Yes
Cranberry Township	Goehring Road	0028	2.5	Suburban	50-100 Feet	Partial	Municipal Road	Flat	No
Cranberry Township	Old Route 19	0027	0.5	Suburban	More than 100 Feet	Partial	Municipal Road	Steep Slope	Yes
Cranberry Township	Powell Road	0022	1	Suburban	More than 100 Feet	Yes	Municipal Road	Medium Slope	Yes
Donegal Township	Irwin Road	0196	0.5	Rural	More than 100 Feet	No	Municipal Road	Steep Slope	Yes
Donegal Township	Landgraf Road	0199	1.5	Urban	Within 50 Feet	Yes	Municipal Road	Gently Sloped	Yes
Donegal Township	Zoo Road	0200	1	Rural	In Waterway/Wetlands	Partial	Municipal Road	Steep Slope	Yes
Fairview Township	Aspen Road	0204	2.5	Rural	50-100 Feet	Yes	Municipal Road	Medium Slope	Yes
Fairview Township	Fairview Road	0178	0.5	Rural	50-100 Feet	Yes	Municipal Road	Medium Slope	Yes
Fairview Township	Kaylor Road	0176	1.5	Rural	More than 100 Feet	Yes	Municipal Road	Steep Slope	Yes

**Attachment 5**

**Butler County IDS Site Characteristics by Municipality \***

<b>Municipality</b>	<b>Site Name</b>	<b>Site Number</b>	<b>Calculated Tons</b>	<b>Demographics</b>	<b>Distance From Waterway</b>	<b>Visibility From Roadway</b>	<b>Road Type</b>	<b>Terrain</b>	<b>Active?</b>
Forward Township	Brownmill Road	0082	0.5	Rural	More than 100 Feet	Partial	Municipal Road	Medium Slope	Yes
Forward Township	George Road	0047	0.5	Rural	Within 50 Feet	Yes	Municipal Road	Gently Sloped	Yes
Forward Township	Needlepoint Road Site 1	0089	0.5	Rural	Within 50 Feet	Yes	Municipal Road	Gently Sloped	Yes
Forward Township	Needlepoint Road Site 2	0090	1	Rural	Within 50 Feet	No	Municipal Road	Steep Slope	Yes
Forward Township	Old 68	0091	0.5	Suburban	No Waterway Nearby	Partial	Municipal Road	Steep Slope	Yes
Forward Township	Reibold Road	0194	0.5	Rural	In Waterway/Wetlands	Partial	Municipal Road	Steep Slope	Yes
Forward Township	Stuckey Road	0193	1.5	Rural	Within 50 Feet	Yes	Municipal Road	Gently Sloped	Yes
Forward Township	Tunnel Road Site 1	0080	1.5	Rural	Within 50 Feet	Partial	Municipal Road	Steep Slope	Yes
Forward Township	Tunnel Road Site 2	0081	1	Rural	50-100 Feet	Yes	Municipal Road	Gently Sloped	Yes
Forward Township	Watters Station Road Site 1	0077	0.5	Rural	More than 100 Feet	Yes	Municipal Road	Flat	Yes
Forward Township	Watters Station Road Site 2	0078	0.5	Rural	More than 100 Feet	Yes	Municipal Road	Medium Slope	Yes
Forward Township	Watters Station Road Site 3	0079	0.5	Rural	Within 50 Feet	Yes	Municipal Road	Gently Sloped	Yes
Franklin Township	Route 422	0218	2	Rural	More than 100 Feet	No	State Road	Flat	Yes
Franklin Township	Whipporwill Road	0217	4	Rural	In Waterway/Wetlands	Yes	Municipal Road	Gently Sloped	Yes
Jackson Township	Fanker Road	0024	1	Rural	More than 100 Feet	Partial	Municipal Road	Extremely Steep	Yes
Jackson Township	Franklin Road	0052	1	Suburban	Within 50 Feet	Yes	Municipal Road	Medium Slope	Yes
Jackson Township	Gudekunst Road	0025	1.5	Rural	No Waterway Nearby	Partial	Municipal Road	Gently Sloped	Yes
Jackson Township	Hartzell Road	0030	0.5	Rural	In Waterway/Wetlands	Partial	Municipal Road	Medium Slope	Yes
Jackson Township	Jo Deener	0033	11	Rural	No Waterway Nearby	Yes	Municipal Road	Gently Sloped	Yes
Jackson Township	Patterson Street Ext. Site 1	0029	0.5	Rural	More than 100 Feet	Partial	Municipal Road	Gently Sloped	Yes
Jackson Township	Patterson Street Ext. Site 2	0031	0.5	Rural	More than 100 Feet	Partial	Municipal Road	Medium Slope	Yes
Jackson Township	Ridge Road Site 1	0032	0.5	Rural	No Waterway Nearby	Yes	Municipal Road	Medium Slope	Yes
Jackson Township	Ridge Road Site 2	0050	0.5	Rural	No Waterway Nearby	Partial	Municipal Road	Steep Slope	Yes
Jackson Township	Ridge Road Site 3	0051	0.5	Rural	No Waterway Nearby	Partial	Municipal Road	Medium Slope	Yes
Jackson Township	Route 528 Site 1	0053	1.5	Rural	More than 100 Feet	No	State Road	Extremely Steep	Yes
Jackson Township	Route 528 Site 2	0083	1	Suburban	No Waterway Nearby	Yes	State Road	Steep Slope	Yes

**Attachment 5**

**Butler County IDS Site Characteristics by Municipality \***

<b>Municipality</b>	<b>Site Name</b>	<b>Site Number</b>	<b>Calculated Tons</b>	<b>Demographics</b>	<b>Distance From Waterway</b>	<b>Visibility From Roadway</b>	<b>Road Type</b>	<b>Terrain</b>	<b>Active?</b>
Jackson Township	Schar Road Site 1	0048	1	Rural	No Waterway Nearby	Yes	Municipal Road	Flat	Yes
Jackson Township	Schar Road Site 2	0049	2	Rural	In Waterway/Wetlands	Partial	Municipal Road	Extremely Steep	Yes
Jackson Township	Texton Hill Road Site 1	0075	1	Rural	More than 100 Feet	Partial	Municipal Road	Steep Slope	Yes
Jackson Township	Texton Hill Road Site 2	0076	1.5	Rural	No Waterway Nearby	Yes	Municipal Road	Flat	Yes
Jefferson Township	Creek Road	0113	0.5	Rural	More than 100 Feet	Yes	Municipal Road	Gently Sloped	Yes
Jefferson Township	Dinnerbell Road	0056	0.5	Suburban	Within 50 Feet	Partial	County Road	Steep Slope	Yes
Jefferson Township	Frazier Road	0054	3	Rural	More than 100 Feet	Yes	Municipal Road	Extremely Steep	Yes
Jefferson Township	Golden City Road	0038	3	Rural	In Waterway/Wetlands	Partial	Municipal Road	Extremely Steep	Yes
Jefferson Township	Mushrush Road Site 1	0071	0.5	Rural	More than 100 Feet	No	Municipal Road	Medium Slope	Yes
Jefferson Township	Mushrush Road Site 2	0072	1.5	Rural	In Waterway/Wetlands	Partial	Municipal Road	Gently Sloped	Yes
Jefferson Township	Ohara Road	0055	0.5	Rural	50-100 Feet	Yes	Municipal Road	Medium Slope	Yes
Jefferson Township	Rennick Road	0073	1	Rural	No Waterway Nearby	Yes	Municipal Road	Flat	Yes
Jefferson Township	Tower Road Site 1	0039	1	Rural	More than 100 Feet	Yes	Municipal Road	Medium Slope	Yes
Jefferson Township	Tower Road Site 2	0040	0.5	Rural	More than 100 Feet	Yes	Municipal Road	Steep Slope	Yes
Lancaster Township	Camp Run Road	0023	1.5	Rural	More than 100 Feet	Partial	Municipal Road	Medium Slope	Yes
Lancaster Township	East Lancaster Road	0088	0.5	Rural	No Waterway Nearby	Yes	Municipal Road	Gently Sloped	Yes
Lancaster Township	Pfeifer Road Site 1	0084	0.5	Rural	More than 100 Feet	Yes	Municipal Road	Gently Sloped	Yes
Lancaster Township	Pfeifer Road Site 2	0085	5	Rural	Within 50 Feet	Yes	Municipal Road	Extremely Steep	Yes
Lancaster Township	Woody Wilson Road	0098	2	Rural	More than 100 Feet	Yes	Municipal Road	Gently Sloped	Yes
Marion Township	Allison Road	0129	0.5	Rural	Within 50 Feet	Yes	Municipal Road	Flat	Yes
Marion Township	Black Road	0134	0.5	Rural	No Waterway Nearby	Partial	Municipal Road	Flat	Yes
Marion Township	Cemetery Road	0185	2	Rural	More than 100 Feet	Yes	Municipal Road	Gently Sloped	Yes
Marion Township	Murrin Road	0133	1	Rural	No Waterway Nearby	Partial	Municipal Road	Medium Slope	Yes
Marion Township	Patton Road	0135	1.5	Rural	No Waterway Nearby	Yes	Municipal Road	Flat	Yes
Marion Township	Ray Rd	0160	0.5	Rural	More than 100 Feet	Yes	Municipal Road	Flat	Yes
Marion Township	Rocky Springs Road	0161	7.5	Rural	More than 100 Feet	Yes	Municipal Road	Gently Sloped	Yes

## Butler County IDS Site Characteristics by Municipality \*

Municipality	Site Name	Site Number	Calculated Tons	Demographics	Distance From Waterway	Visibility From Roadway	Road Type	Terrain	Active?
Marion Township	Route 308	0131	1	Rural	No Waterway Nearby	Partial	State Road	Gently Sloped	Yes
Marion Township	Unity Road	0130	8	Rural	No Waterway Nearby	Yes	Municipal Road	Gently Sloped	Yes
Marion Township	Windy Point Road	0132	1	Rural	No Waterway Nearby	Partial	Municipal Road	Flat	Yes
Mercer Township	Route 58	0117	1.5	Rural	50-100 Feet	Partial	County Road	Medium Slope	Yes
Mercer Township	Route 8	0158	1	Rural	Within 50 Feet	Partial	State Road	Medium Slope	Yes
Mercer Township	Sutherland Road	0159	0.5	Rural	No Waterway Nearby	Yes	Municipal Road	Flat	Yes
Middlesex Township	Corner of Deer Creek & Cherry Valley Roads	0004	0.5	Rural	50-100 Feet	Partial	Municipal Road	Flat	Yes
Middlesex Township	Deer Creek Road	0003	0.5	Rural	50-100 Feet	Yes	Municipal Road	Steep Slope	Yes
Middlesex Township	Denny Road	0010	1	Rural	No Waterway Nearby	Yes	Municipal Road	Gently Sloped	Yes
Middlesex Township	Forsythe Road	0014	0.5	Rural	No Waterway Nearby	Partial	Municipal Road	Medium Slope	Yes
Middlesex Township	Homestead Drive	0009	2	Suburban	No Waterway Nearby	Yes	Municipal Road	Gently Sloped	Yes
Middlesex Township	Kyle Road	0002	2	Rural	No Waterway Nearby	Yes	Municipal Road	Flat	Yes
Middlesex Township	List Hill Road	0012	1	Rural	50-100 Feet	Partial	Municipal Road	Steep Slope	Yes
Middlesex Township	Old Route 8	0008	1.5	Suburban	No Waterway Nearby	Yes	Municipal Road	Gently Sloped	Yes
Muddy Creek Township	Kelly Road Site 1	0095	1	Rural	In Waterway/Wetlands	Yes	Municipal Road	Steep Slope	Yes
Muddy Creek Township	Kelly Road Site 2	0096	7.5	Rural	More than 100 Feet	Partial	Municipal Road	Medium Slope	Yes
Muddy Creek Township	Sawyer Road Site 1	0086	3.5	Rural	No Waterway Nearby	Yes	Municipal Road	Steep Slope	Yes
Muddy Creek Township	Sawyer Road Site 2	0087	0.5	Rural	In Waterway/Wetlands	Partial	Municipal Road	Steep Slope	Yes
Muddy Creek Township	Stanford Road Site 1	0093	2.5	Rural	In Waterway/Wetlands	Yes	Municipal Road	Medium Slope	Yes
Muddy Creek Township	Stanford Road Site 2	0094	3.5	Rural	In Waterway/Wetlands	Partial	Municipal Road	Steep Slope	Yes
Muddy Creek Township	Yellow Creek Road	0097	5	Rural	50-100 Feet	Partial	Municipal Road	Steep Slope	Yes
Oakland Township	Beulah Road	0208	1	Suburban	No Waterway Nearby	Yes	Municipal Road	Gently Sloped	Yes
Oakland Township	Conway Road	0210	2.5	Rural	More than 100 Feet	Yes	Municipal Road	Medium Slope	Yes
Oakland Township	Mottern Road	0211	1	Rural	More than 100 Feet	Yes	Municipal Road	Gently Sloped	Yes
Oakland Township	Old East Butler Road	0202	0.5	Rural	More than 100 Feet	Yes	Municipal Road	Gently Sloped	Yes
Oakland Township	St. Joe Road	0201	1	Rural	In Waterway/Wetlands	Partial	Municipal Road	Medium Slope	Yes

## Butler County IDS Site Characteristics by Municipality \*

Municipality	Site Name	Site Number	Calculated Tons	Demographics	Distance From Waterway	Visibility From Roadway	Road Type	Terrain	Active?
Oakland Township	Thorn Road	0209	0.5	Rural	Within 50 Feet	Yes	Municipal Road	Gently Sloped	Yes
Oakland Township	West Danville Road	0198	1.5	Suburban	50-100 Feet	Yes	Municipal Road	Medium Slope	Yes
Parker Township	Christy Hill Road	0205	1	Rural	No Waterway Nearby	Partial	Municipal Road	Medium Slope	Yes
Parker Township	East Eldorado Road Site 1	0172	2	Rural	No Waterway Nearby	Yes	Municipal Road	Medium Slope	Yes
Parker Township	East Eldorado Road Site 2	0173	2	Rural	More than 100 Feet	No	Municipal Road	Extremely Steep	Yes
Parker Township	East Eldorado Road Site 3	0174	0.5	Rural	In Waterway/Wetlands	Partial	Municipal Road	Gently Sloped	Yes
Parker Township	Say Road	0175	0.5	Rural	More than 100 Feet	Partial	Municipal Road	Medium Slope	Yes
Parker Township	Story Road	0177	0.5	Rural	More than 100 Feet	Yes	Municipal Road	Medium Slope	Yes
Parker Township	West Eldorado Road	0171	2.5	Rural	No Waterway Nearby	Partial	Municipal Road	Gently Sloped	Yes
Penn Township	Church Road	0115	0.5	Rural	No Waterway Nearby	Yes	Municipal Road	Medium Slope	Yes
Penn Township	Creek Road/Reamer Road	0114	2.5	Rural	In Waterway/Wetlands	Yes	Municipal Road	Medium Slope	Yes
Penn Township	Golden City Road	0034	1	Rural	50-100 Feet	Yes	Municipal Road	Gently Sloped	Yes
Penn Township	S. Crisswell Road	0112	1	Rural	More than 100 Feet	Yes	Municipal Road	Gently Sloped	Yes
Penn Township	South Dutchtown Road	0111	1.5	Rural	Within 50 Feet	Partial	Municipal Road	Steep Slope	Yes
Penn Township	Winters Road	0109	0.5	Suburban	More than 100 Feet	Partial	Municipal Road	Steep Slope	Yes
Penn Township	Woodland Road	0110	0.5	Rural	More than 100 Feet	No	Municipal Road	Steep Slope	Yes
Slippery Rock Township	Forrester Road	0128	1.5	Rural	More than 100 Feet	No	Municipal Road	Medium Slope	Yes
Slippery Rock Township	Miller Road	0127	1	Rural	Within 50 Feet	Partial	Municipal Road	Steep Slope	Yes
Slippery Rock Township	Stoughton Road Site 1	0148	0.75	Rural	No Waterway Nearby	Yes	Municipal Road	Flat	Yes
Slippery Rock Township	Stoughton Road Site 2	0149	0.5	Rural	No Waterway Nearby	Yes	Municipal Road	Flat	Yes
Summit Township	Geibel Road	0168	1.5	Suburban	More than 100 Feet	Yes	Municipal Road	Medium Slope	Yes
Summit Township	Linwood Road	0203	1	Rural	More than 100 Feet	Partial	Municipal Road	Steep Slope	Yes
Summit Township	Moran Road	0169	0.5	Rural	More than 100 Feet	Partial	Municipal Road	Medium Slope	Yes
Summit Township	Portman Road	0167	0.5	Rural	More than 100 Feet	Yes	Municipal Road	Medium Slope	Yes
Summit Township	Protzman Rd	0166	0.5	Suburban	More than 100 Feet	Partial	Municipal Road	Medium Slope	Yes
Summit Township	Stutz Road	0165	0.5	Suburban	More than 100 Feet	No	Municipal Road	Medium Slope	Yes



**Attachment 5**

**Butler County IDS Site Characteristics by Municipality \***

<b>Municipality</b>	<b>Site Name</b>	<b>Site Number</b>	<b>Calculated Tons</b>	<b>Demographics</b>	<b>Distance From Waterway</b>	<b>Visibility From Roadway</b>	<b>Road Type</b>	<b>Terrain</b>	<b>Active?</b>
Venango Township	Cemetery Road	0188	2	Rural	More than 100 Feet	Partial	Municipal Road	Gently Sloped	Yes
Venango Township	Erico Road Site 1	0186	0.5	Rural	50-100 Feet	Yes	Municipal Road	Flat	Yes
Venango Township	Erico Road Site 2	0187	1.5	Rural	No Waterway Nearby	Yes	Municipal Road	Gently Sloped	Yes
Venango Township	Goff Station Road	0184	4	Rural	No Waterway Nearby	Yes	Municipal Road	Gently Sloped	Yes
Venango Township	Heaven Lane	0122	0.5	Rural	No Waterway Nearby	Yes	Municipal Road	Gently Sloped	Yes
Venango Township	Jamison Road Site 1	0119	0.5	Rural	No Waterway Nearby	Yes	Municipal Road	Gently Sloped	Yes
Venango Township	Jamison Road Site 2	0120	1	Rural	In Waterway/Wetlands	Partial	Municipal Road	Extremely Steep	Yes
Venango Township	Kelly Road	0121	1	Rural	No Waterway Nearby	Yes	Municipal Road	Flat	Yes
Venango Township	Pison Road	0189	0.5	Rural	More than 100 Feet	Yes	Municipal Road	Medium Slope	Yes
Washington Township	Bill Morris Road	0206	1	Rural	Within 50 Feet	Partial	Municipal Road	Steep Slope	Yes
Washington Township	Branchton Road	0192	1	Rural	More than 100 Feet	Yes	Municipal Road	Gently Sloped	Yes
Washington Township	Cannel Coal Road	0215	0.5	Rural	More than 100 Feet	Yes	Municipal Road	Gently Sloped	Yes
Washington Township	Higgins Corner Road Site 1	0181	0.5	Rural	No Waterway Nearby	Partial	Municipal Road	Medium Slope	Yes
Washington Township	Higgins Corner Road Site 2	0190	1.5	Rural	More than 100 Feet	Yes	Municipal Road	Steep Slope	Yes
Washington Township	Pleasant Valley Road	0191	0.5	Rural	More than 100 Feet	Yes	Municipal Road	Medium Slope	Yes
Washington Township	Route 38	0179	10	Rural	No Waterway Nearby	Yes	State Road	Flat	Yes
West Liberty Borough	Church Road	0144	1.5	Rural	No Waterway Nearby	Partial	Municipal Road	Medium Slope	Yes
West Liberty Borough	Crolls Mill Road	0143	1	Rural	No Waterway Nearby	Partial	Municipal Road	Flat	Yes
West Liberty Borough	Rhoer Road	0139	0.5	Rural	No Waterway Nearby	Yes	Municipal Road	Medium Slope	Yes
Winfield Township	Cornplanter Road	0102	0.5	Rural	In Waterway/Wetlands	Yes	Municipal Road	Gently Sloped	Yes
Winfield Township	Gerner Road	0104	2	Rural	More than 100 Feet	Yes	Municipal Road	Gently Sloped	Yes
Winfield Township	Star Grill Road	0108	1	Rural	Within 50 Feet	No	Municipal Road	Steep Slope	Yes
Winfield Township	Stoney Hollow Road	0067	2.5	Rural	In Waterway/Wetlands	Yes	Municipal Road	Gently Sloped	Yes
Winfield Township	Winfield Road	0103	0.5	Rural	More than 100 Feet	Yes	Municipal Road	Steep Slope	Yes
Worth Township	Barron Road	0147	0.5	Rural	More than 100 Feet	Yes	Municipal Road	Gently Sloped	Yes
Worth Township	Book Road Site 1	0221	1.5	Rural	More than 100 Feet	Yes	Municipal Road	Medium Slope	Yes

## Butler County IDS Site Characteristics by Municipality \*

Municipality	Site Name	Site Number	Calculated Tons	Demographics	Distance From Waterway	Visibility From Roadway	Road Type	Terrain	Active?
Worth Township	Book Road Site 2	0222	2.5	Rural	More than 100 Feet	Yes	Municipal Road	Gently Sloped	Yes
Worth Township	Currie Road	0223	1.5	Rural	More than 100 Feet	Yes	Municipal Road	Flat	Yes
Worth Township	Dickey Road	0142	0.5	Rural	50-100 Feet	Partial	Municipal Road	Medium Slope	Yes
Worth Township	McCoy Road	0146	0.5	Rural	50-100 Feet	Yes	Municipal Road	Medium Slope	Yes
Worth Township	Reichert Road	0136	0.5	Rural	In Waterway/Wetlands	Yes	Municipal Road	Flat	Yes
Worth Township	Roher Road	0137	0.5	Rural	In Waterway/Wetlands	Yes	Municipal Road	Gently Sloped	Yes
Worth Township	Swope Road	0141	0.5	Rural	No Waterway Nearby	Yes	Municipal Road	Flat	Yes
Worth Township	Taggart Road	0145	4	Rural	50-100 Feet	Yes	Municipal Road	Medium Slope	Yes
Worth Township	West Liberty Road	0138	1.5	Rural	No Waterway Nearby	Partial	Municipal Road	Gently Sloped	Yes

**Total Number of Sites:** **217**    **Total Tons:** **316.25**

\* Characteristics assessed at time of survey were estimates based on what was visible.

## Butler County IDS Waste Characteristics by Municipality \*

Municipality	Site Name	Site Number	Calculated Tons	Bagged Trash	Household Trash	Recyclables	HHW	Tires	Clean Fill	C and D Waste	Yard Waste	White Goods	Electronics	Televisions	Furniture	Mattresses	Vehicle Parts	Car Batteries
Adams Township	Dobson Road	0019	0.5	No	Yes	No	No	0	No	No	No	0	0	0	0	0	No	0
Adams Township	List Hill Road	0013	1	No	Yes	Yes	Yes	8	No	Yes	No	0	0	0	0	0	No	0
Adams Township	Three Degree Road	0011	2.5	No	No	No	No	0	No	No	No	0	0	0	0	0	No	0
Adams Township	Union Church Road	0018	0.5	No	No	No	No	10	No	No	No	0	0	0	0	0	No	0
Allegheny Township	Division Road Ext. Site 1	0162	0.5	No	Yes	Yes	No	0	No	No	No	0	0	0	0	1	No	0
Allegheny Township	Division Road Ext. Site 2	0163	4	Yes	Yes	Yes	No	35	No	Yes	No	6	0	0	1	0	Yes	0
Allegheny Township	McKee Road Site 1	0123	2	No	No	No	No	0	No	No	No	0	0	0	0	0	No	0
Allegheny Township	McKee Road Site 2	0124	1	No	No	No	No	0	No	No	No	3	0	0	2	0	No	0
Allegheny Township	Milford Road	0125	1	Yes	Yes	Yes	Yes	0	No	Yes	No	0	0	0	0	0	No	0
Allegheny Township	Sertik Road	0164	7.5	Yes	Yes	Yes	No	15	No	Yes	No	7	0	0	0	0	Yes	0
Allegheny Township	Slater Road	0126	1	No	No	No	No	0	No	No	No	0	0	0	0	0	No	0
Brady Township	Alexander Road	0140	0.5	No	Yes	Yes	No	4	No	No	No	0	0	0	0	0	No	0
Buffalo Township	Cabbage Road	0066	0.5	No	Yes	Yes	No	12	No	No	No	0	0	0	2	0	No	0
Buffalo Township	Coal Hollow Road Site 1	0062	2.5	Yes	Yes	Yes	No	6	No	No	No	1	0	0	0	0	No	0
Buffalo Township	Coal Hollow Road Site 2	0064	0.5	Yes	Yes	Yes	No	0	No	No	No	0	0	0	0	0	No	0
Buffalo Township	Coal Hollow Road Site 3	0065	0.5	Yes	Yes	Yes	No	0	No	No	No	0	0	0	0	0	No	0
Buffalo Township	Cole Road	0060	2.5	Yes	Yes	Yes	Yes	0	No	Yes	No	0	0	0	0	0	No	0
Buffalo Township	Kepple Road Site 1	0069	0.5	No	Yes	Yes	No	0	No	No	No	0	0	0	0	0	No	0
Buffalo Township	Kepple Road Site 2	0070	0.5	No	Yes	Yes	No	2	No	No	No	0	0	0	0	0	No	0
Buffalo Township	Parker Road	0059	0.5	Yes	Yes	Yes	No	0	No	No	No	0	0	0	0	0	No	0
Buffalo Township	Stepp Road	0068	0.5	No	Yes	Yes	No	0	No	No	No	0	0	0	0	0	No	0
Buffalo Township	Thompson Road	0058	0.5	No	Yes	Yes	No	0	No	No	No	0	0	0	0	0	No	0
Buffalo Township	Younkins Drive	0061	0.5	Yes	Yes	Yes	No	0	No	Yes	No	0	0	0	0	0	No	0
Butler Township	McCalmont Road	0195	2	Yes	Yes	Yes	Yes	20	Yes	Yes	Yes	0	0	0	6	0	Yes	0
Butler Township	North Crisswell	0074	0.5	Yes	Yes	Yes	No	1	No	No	No	0	0	0	0	0	No	0
Center Township	Palmer Road	0207	0.5	Yes	Yes	Yes	No	5	No	No	No	0	0	0	0	0	No	0

## Butler County IDS Waste Characteristics by Municipality \*

Municipality	Site Name	Site Number	Calculated Tons	Bagged Trash	Household Trash	Recyclables	HHW	Tires	Clean Fill	C and D Waste	Yard Waste	White Goods	Electronics	Televisions	Furniture	Mattresses	Vehicle Parts	Car Batteries
Center Township	Pine Tract Road	0214	1	Yes	Yes	Yes	Yes	2	No	Yes	No	0	1	1	2	0	No	0
Cherry Township	Coaltown Road	0154	5	No	No	Yes	No	35	No	Yes	No	5	0	0	0	0	Yes	0
Cherry Township	Hungarian Road	0152	1.5	No	No	No	No	0	No	No	No	1	0	0	0	0	No	0
Cherry Township	New Hope Road	0157	0.5	Yes	Yes	Yes	No	0	No	No	No	0	0	0	0	0	No	0
Cherry Township	Redbrush Road Site 1	0155	2.5	Yes	Yes	Yes	No	6	No	Yes	No	0	0	0	4	1	Yes	0
Cherry Township	Redbrush Road Site 2	0156	4	No	No	No	No	10	No	Yes	No	0	0	0	0	0	Yes	0
Cherry Township	Sangia Road	0153	0.5	Yes	Yes	Yes	No	1	No	No	No	0	0	0	0	0	No	4
Clay Township	Halston Road	0150	2.5	Yes	Yes	Yes	No	6	No	Yes	No	0	0	0	0	0	Yes	0
Clay Township	Hungarian Rd/Grossman Rd	0151	2	No	Yes	Yes	No	30	No	No	No	0	0	0	0	0	No	0
Clay Township	Jackson Road	0213	0.5	No	No	No	No	4	No	No	No	1	0	0	1	0	No	0
Clay Township	Mahood Road	0212	0.5	Yes	Yes	Yes	No	0	No	No	No	0	0	0	0	0	No	0
Clay Township	Shroyer Mill Road	0220	1	Yes	Yes	Yes	No	30	No	No	No	0	0	0	0	0	No	0
Clay Township	Vidic Road	0219	1	Yes	Yes	Yes	Yes	8	Yes	Yes	No	2	1	1	4	1	No	0
Clearfield Township	Burke Road	0106	1	Yes	Yes	Yes	No	3	No	No	No	0	0	0	0	0	No	0
Clearfield Township	Long Run Road	0105	1	Yes	Yes	Yes	No	30	No	Yes	No	0	0	1	0	0	No	0
Clearfield Township	McGrady Hollow Road Site 1	0182	0.5	Yes	Yes	Yes	No	2	Yes	Yes	No	0	0	0	0	0	No	0
Clearfield Township	McGrady Hollow Road Site 2	0183	1	Yes	Yes	Yes	No	1	No	No	No	0	1	1	0	0	No	0
Clearfield Township	Russel Road	0107	0.5	Yes	Yes	Yes	No	1	No	No	No	0	0	0	0	0	No	0
Clearfield Township	Schiebel Road	0170	0.5	No	Yes	Yes	No	0	No	No	No	0	0	0	0	0	No	0
Clinton Township	Cannon Hill Road	0006	2.5	No	No	No	No	0	No	No	No	0	0	0	0	0	No	0
Clinton Township	Cherry Valley Road Site 1	0005	0.5	No	Yes	Yes	No	4	No	No	No	0	0	0	0	0	No	0
Clinton Township	Cherry Valley Road Site 2	0016	3	Yes	Yes	Yes	Yes	20	Yes	Yes	No	0	0	0	0	0	Yes	0
Clinton Township	Christy Road	0007	10	No	No	No	No	500	No	No	No	0	0	0	0	0	No	0
Clinton Township	Goldscheitter Road	0046	2	Yes	Yes	Yes	Yes	6	No	Yes	No	1	1	1	1	0	No	0
Clinton Township	Hidden Hill Road	0043	1.5	Yes	Yes	Yes	Yes	35	No	Yes	No	0	2	2	0	0	No	0
Clinton Township	Knoch School Road	0057	2.5	No	No	Yes	Yes	12	No	Yes	No	0	0	0	0	0	No	0

## Attachment 6

## Butler County IDS Waste Characteristics by Municipality \*

Municipality	Site Name	Site Number	Calculated Tons	Bagged Trash	Household Trash	Recyclables	HHW	Tires	Clean Fill	C and D Waste	Yard Waste	White Goods	Electronics	Televisions	Furniture	Mattresses	Vehicle Parts	Car Batteries
Clinton Township	Saxonburg Blvd	0017	2.5	Yes	Yes	Yes	Yes	15	No	Yes	No	0	0	0	5	0	Yes	0
Clinton Township	Spring Valley Road	0036	1	Yes	Yes	Yes	Yes	6	No	Yes	No	0	0	0	0	0	No	0
Clinton Township	Stark Road Site 1	0044	1.5	Yes	Yes	Yes	No	25	No	No	No	1	0	0	0	0	No	0
Clinton Township	Stark Road Site 2	0045	0.5	No	No	No	No	0	No	No	No	0	0	0	0	0	No	0
Clinton Township	Tower Road Site 1	0041	1	Yes	Yes	Yes	Yes	2	No	Yes	Yes	0	0	0	0	0	Yes	0
Clinton Township	Tower Road Site 2	0042	0.5	Yes	Yes	Yes	No	4	No	No	No	0	0	0	0	0	No	0
Clinton Township	Victory Road Site 1	0035	0.5	Yes	Yes	Yes	No	0	No	No	No	0	0	0	0	0	No	0
Clinton Township	Victory Road Site 2	0037	1	Yes	Yes	Yes	Yes	10	Yes	Yes	Yes	0	0	0	0	0	No	0
Clinton Township	Wiley Road	0015	0.5	No	Yes	Yes	No	6	No	No	No	0	0	0	0	0	No	0
Concord Township	Bell Road	0216	0.5	Yes	Yes	Yes	Yes	0	No	Yes	No	0	0	0	0	0	No	0
Connoquenessing Township	Crab Run Road	0099	0.5	Yes	Yes	Yes	No	0	No	No	No	0	0	0	0	0	No	0
Connoquenessing Township	Harmony Road	0101	1.5	No	No	Yes	No	0	No	Yes	No	1	0	0	0	0	No	0
Connoquenessing Township	Welsh Road	0092	2.5	Yes	Yes	Yes	No	25	No	Yes	No	0	0	0	1	0	No	0
Connoquenessing Township	Whitestown Road Ext.	0100	0.5	No	No	No	No	25	No	No	No	0	0	0	0	0	No	0
Cranberry Township	Darlington Road Site 1	0020	1	No	No	No	No	30	No	No	No	0	0	0	0	0	No	0
Cranberry Township	Darlington Road Site 2	0021	1	No	No	No	No	20	No	No	No	0	0	0	0	0	No	0
Cranberry Township	Glenrape Road	0026	1	Yes	Yes	Yes	Yes	0	No	Yes	No	0	0	0	3	0	Yes	0
Cranberry Township	Goehring Road	0028	2.5	Yes	Yes	Yes	Yes	0	No	Yes	No	0	0	0	0	0	Yes	0
Cranberry Township	Old Route 19	0027	0.5	No	Yes	Yes	No	5	No	No	No	0	0	0	0	0	No	0
Cranberry Township	Powell Road	0022	1	Yes	Yes	Yes	Yes	0	No	Yes	No	0	0	0	0	0	No	0
Donegal Township	Irwin Road	0196	0.5	No	No	No	No	5	No	No	No	0	0	0	0	0	No	0
Donegal Township	Landgraf Road	0199	1.5	No	Yes	Yes	Yes	0	No	Yes	No	0	1	1	0	0	No	0
Donegal Township	Zoo Road	0200	1	Yes	Yes	Yes	No	0	No	No	No	6	0	0	0	0	No	0
Fairview Township	Aspen Road	0204	2.5	Yes	Yes	Yes	Yes	65	No	Yes	No	1	0	0	2	0	No	0
Fairview Township	Fairview Road	0178	0.5	No	Yes	Yes	No	2	No	No	No	0	2	2	0	0	No	0
Fairview Township	Kaylor Road	0176	1.5	No	No	No	No	50	No	No	No	0	0	0	0	0	No	0

## Butler County IDS Waste Characteristics by Municipality \*

Municipality	Site Name	Site Number	Calculated Tons	Bagged Trash	Household Trash	Recyclables	HHW	Tires	Clean Fill	C and D Waste	Yard Waste	White Goods	Electronics	Televisions	Furniture	Mattresses	Vehicle Parts	Car Batteries
Forward Township	Brownmill Road	0082	0.5	Yes	Yes	Yes	No	0	No	No	No	0	0	0	0	0	No	0
Forward Township	George Road	0047	0.5	No	No	No	No	12	No	No	No	0	0	0	0	0	No	0
Forward Township	Needlepoint Road Site 1	0089	0.5	No	No	No	No	4	No	No	No	0	0	0	0	0	No	0
Forward Township	Needlepoint Road Site 2	0090	1	Yes	Yes	Yes	No	10	No	No	No	0	0	0	0	0	Yes	1
Forward Township	Old 68	0091	0.5	No	Yes	Yes	No	0	No	No	No	0	0	0	0	0	No	0
Forward Township	Reibold Road	0194	0.5	Yes	Yes	Yes	Yes	5	No	Yes	No	0	0	0	1	0	No	0
Forward Township	Stuckey Road	0193	1.5	Yes	Yes	Yes	Yes	40	Yes	Yes	No	1	1	1	1	0	No	0
Forward Township	Tunnel Road Site 1	0080	1.5	No	No	No	No	50	No	No	No	0	0	0	0	0	No	0
Forward Township	Tunnel Road Site 2	0081	1	No	Yes	Yes	No	10	No	No	No	1	1	0	0	0	Yes	0
Forward Township	Watters Station Road Site 1	0077	0.5	No	Yes	Yes	Yes	5	No	Yes	No	0	0	0	0	0	No	0
Forward Township	Watters Station Road Site 2	0078	0.5	No	No	No	No	0	No	Yes	No	0	0	0	0	0	No	0
Forward Township	Watters Station Road Site 3	0079	0.5	No	Yes	Yes	No	0	No	No	No	0	0	0	0	0	No	0
Franklin Township	Route 422	0218	2	Yes	Yes	Yes	Yes	50	Yes	Yes	No	10	0	0	3	0	No	0
Franklin Township	Whipporwill Road	0217	4	Yes	Yes	Yes	Yes	50	No	Yes	No	5	2	2	5	1	Yes	0
Jackson Township	Fanker Road	0024	1	No	Yes	Yes	No	0	No	No	No	0	0	0	0	0	No	0
Jackson Township	Franklin Road	0052	1	Yes	Yes	Yes	Yes	30	No	Yes	No	0	0	0	5	0	Yes	0
Jackson Township	Gudekunst Road	0025	1.5	Yes	Yes	Yes	Yes	15	No	Yes	No	0	0	0	0	0	Yes	0
Jackson Township	Hartzell Road	0030	0.5	Yes	Yes	Yes	No	0	No	No	No	0	0	0	0	0	No	0
Jackson Township	Jo Deener	0033	11	No	Yes	Yes	Yes	0	No	Yes	No	0	0	0	0	0	Yes	0
Jackson Township	Patterson Street Ext. Site 1	0029	0.5	Yes	Yes	Yes	No	3	No	Yes	No	0	0	0	0	0	No	0
Jackson Township	Patterson Street Ext. Site 2	0031	0.5	No	No	No	No	0	No	No	No	0	0	0	0	0	No	0
Jackson Township	Ridge Road Site 1	0032	0.5	No	No	No	No	0	No	No	No	1	0	0	0	0	No	0
Jackson Township	Ridge Road Site 2	0050	0.5	No	Yes	Yes	No	10	No	No	No	0	0	0	0	0	No	0
Jackson Township	Ridge Road Site 3	0051	0.5	No	Yes	Yes	No	0	No	No	No	2	0	0	0	0	No	0
Jackson Township	Route 528 Site 1	0053	1.5	Yes	Yes	Yes	Yes	25	No	Yes	No	0	0	0	0	0	No	0
Jackson Township	Route 528 Site 2	0083	1	No	Yes	Yes	Yes	0	No	Yes	No	0	0	0	1	0	No	0

## Butler County IDS Waste Characteristics by Municipality \*

Municipality	Site Name	Site Number	Calculated Tons	Bagged Trash	Household Trash	Recyclables	HHW	Tires	Clean Fill	C and D Waste	Yard Waste	White Goods	Electronics	Televisions	Furniture	Mattresses	Vehicle Parts	Car Batteries
Jackson Township	Schar Road Site 1	0048	1	Yes	Yes	Yes	Yes	4	No	Yes	No	0	0	0	0	0	No	0
Jackson Township	Schar Road Site 2	0049	2	No	Yes	Yes	Yes	10	No	Yes	No	4	0	0	0	0	Yes	0
Jackson Township	Texton Hill Road Site 1	0075	1	No	Yes	Yes	No	0	No	No	No	0	0	0	0	0	No	0
Jackson Township	Texton Hill Road Site 2	0076	1.5	Yes	Yes	Yes	No	18	No	No	No	0	0	0	2	0	Yes	0
Jefferson Township	Creek Road	0113	0.5	No	No	No	No	12	No	No	No	0	0	0	0	0	No	0
Jefferson Township	Dinnerbell Road	0056	0.5	Yes	Yes	Yes	No	4	No	No	No	0	0	0	0	0	No	0
Jefferson Township	Frazier Road	0054	3	Yes	Yes	Yes	Yes	0	No	Yes	No	0	0	0	0	0	No	0
Jefferson Township	Golden City Road	0038	3	Yes	Yes	Yes	Yes	70	No	Yes	Yes	0	0	0	0	0	Yes	0
Jefferson Township	Mushrush Road Site 1	0071	0.5	No	Yes	Yes	No	1	No	No	No	0	0	0	0	0	No	0
Jefferson Township	Mushrush Road Site 2	0072	1.5	Yes	Yes	Yes	No	10	No	No	No	8	0	0	0	0	Yes	0
Jefferson Township	Ohara Road	0055	0.5	Yes	Yes	Yes	No	4	No	No	No	0	0	0	0	0	No	0
Jefferson Township	Rennick Road	0073	1	No	Yes	Yes	No	0	No	No	No	2	0	0	0	0	No	0
Jefferson Township	Tower Road Site 1	0039	1	No	No	No	Yes	15	No	Yes	No	0	0	0	0	0	Yes	0
Jefferson Township	Tower Road Site 2	0040	0.5	Yes	Yes	Yes	Yes	10	No	Yes	No	0	0	0	1	0	No	0
Lancaster Township	Camp Run Road	0023	1.5	No	No	No	No	0	No	No	No	0	0	0	0	0	No	0
Lancaster Township	East Lancaster Road	0088	0.5	Yes	Yes	Yes	No	2	No	No	No	0	0	0	0	0	No	0
Lancaster Township	Pfeifer Road Site 1	0084	0.5	Yes	Yes	Yes	No	1	No	No	No	0	0	0	0	0	No	0
Lancaster Township	Pfeifer Road Site 2	0085	5	Yes	Yes	Yes	No	50	No	No	Yes	0	0	0	5	0	No	0
Lancaster Township	Woody Wilson Road	0098	2	No	Yes	Yes	Yes	0	No	Yes	No	0	0	0	0	0	No	0
Marion Township	Allison Road	0129	0.5	No	No	No	Yes	0	No	Yes	No	0	0	0	0	0	No	0
Marion Township	Black Road	0134	0.5	No	No	No	No	0	No	No	No	0	0	0	0	0	No	0
Marion Township	Cemetery Road	0185	2	Yes	Yes	Yes	Yes	4	No	Yes	No	1	0	0	2	1	Yes	0
Marion Township	Murrin Road	0133	1	No	Yes	Yes	No	0	No	Yes	No	0	0	0	0	0	No	0
Marion Township	Patton Road	0135	1.5	No	Yes	Yes	No	0	No	Yes	No	0	0	0	0	2	No	0
Marion Township	Ray Rd	0160	0.5	No	Yes	Yes	No	0	No	No	No	0	0	0	0	0	No	0
Marion Township	Rocky Springs Road	0161	7.5	Yes	Yes	Yes	No	60	No	Yes	No	0	0	0	0	0	Yes	0

## Butler County IDS Waste Characteristics by Municipality \*

Municipality	Site Name	Site Number	Calculated Tons	Bagged Trash	Household Trash	Recyclables	HHW	Tires	Clean Fill	C and D Waste	Yard Waste	White Goods	Electronics	Televisions	Furniture	Mattresses	Vehicle Parts	Car Batteries
Marion Township	Route 308	0131	1	No	Yes	Yes	No	0	No	No	No	1	0	0	0	0	Yes	0
Marion Township	Unity Road	0130	8	Yes	Yes	Yes	Yes	100	No	Yes	No	0	0	0	0	0	Yes	0
Marion Township	Windy Point Road	0132	1	No	No	No	No	1	No	Yes	No	2	1	0	1	0	No	0
Mercer Township	Route 58	0117	1.5	Yes	Yes	Yes	No	4	No	Yes	No	1	0	0	0	0	No	0
Mercer Township	Route 8	0158	1	No	No	No	No	0	No	No	No	1	0	0	0	0	No	0
Mercer Township	Sutherland Road	0159	0.5	No	Yes	Yes	No	2	No	No	No	0	0	0	0	0	No	0
Middlesex Township	Corner of Deer Creek & Cherry Valley	0004	0.5	No	Yes	Yes	No	0	No	No	No	0	0	0	0	0	No	0
Middlesex Township	Deer Creek Road	0003	0.5	Yes	Yes	Yes	No	0	No	No	No	0	0	0	0	0	No	0
Middlesex Township	Denny Road	0010	1	No	No	No	No	60	No	No	No	0	0	0	0	0	No	0
Middlesex Township	Forsythe Road	0014	0.5	Yes	Yes	Yes	No	0	No	No	No	0	0	0	0	0	No	0
Middlesex Township	Homestead Drive	0009	2	Yes	Yes	Yes	Yes	0	No	Yes	No	0	0	0	4	0	No	0
Middlesex Township	Kyle Road	0002	2	No	No	No	No	100	No	No	No	0	0	0	0	0	No	0
Middlesex Township	List Hill Road	0012	1	No	No	Yes	Yes	0	No	Yes	No	0	0	0	0	0	No	0
Middlesex Township	Old Route 8	0008	1.5	Yes	Yes	No	Yes	0	No	Yes	No	0	0	0	0	0	Yes	0
Muddy Creek Township	Kelly Road Site 1	0095	1	Yes	Yes	Yes	No	10	No	No	No	0	0	0	0	0	No	0
Muddy Creek Township	Kelly Road Site 2	0096	7.5	Yes	Yes	Yes	No	40	No	Yes	No	0	0	5	0	0	No	1
Muddy Creek Township	Sawyer Road Site 1	0086	3.5	Yes	Yes	Yes	No	50	Yes	No	Yes	0	0	0	3	0	Yes	0
Muddy Creek Township	Sawyer Road Site 2	0087	0.5	No	No	No	No	0	No	No	No	0	0	0	0	0	No	0
Muddy Creek Township	Stanford Road Site 1	0093	2.5	Yes	Yes	Yes	Yes	2	No	Yes	No	0	0	0	2	0	No	0
Muddy Creek Township	Stanford Road Site 2	0094	3.5	Yes	Yes	Yes	Yes	75	Yes	Yes	No	0	0	0	0	0	Yes	0
Muddy Creek Township	Yellow Creek Road	0097	5	No	Yes	Yes	No	0	No	Yes	No	5	0	0	0	0	No	0
Oakland Township	Beulah Road	0208	1	No	Yes	Yes	Yes	4	No	Yes	No	0	0	0	0	0	No	0
Oakland Township	Conway Road	0210	2.5	Yes	Yes	Yes	Yes	60	No	Yes	No	0	0	0	0	0	Yes	0
Oakland Township	Mottern Road	0211	1	Yes	Yes	Yes	Yes	5	No	Yes	No	0	1	1	2	1	No	0
Oakland Township	Old East Butler Road	0202	0.5	Yes	Yes	Yes	No	0	No	No	No	0	0	0	0	0	No	0
Oakland Township	St. Joe Road	0201	1	Yes	Yes	Yes	No	0	No	Yes	No	1	1	1	0	0	No	0



## Butler County IDS Waste Characteristics by Municipality \*

Municipality	Site Name	Site Number	Calculated Tons	Bagged Trash	Household Trash	Recyclables	HHW	Tires	Clean Fill	C and D Waste	Yard Waste	White Goods	Electronics	Televisions	Furniture	Mattresses	Vehicle Parts	Car Batteries
Oakland Township	Thorn Road	0209	0.5	Yes	Yes	Yes	No	1	No	No	No	0	0	0	0	0	No	0
Oakland Township	West Danville Road	0198	1.5	Yes	Yes	Yes	Yes	5	No	Yes	No	0	0	0	0	0	No	0
Parker Township	Christy Hill Road	0205	1	No	No	No	Yes	0	No	Yes	No	0	0	0	2	0	No	0
Parker Township	East Eldorado Road Site 1	0172	2	No	No	Yes	No	0	No	No	No	0	0	0	0	0	No	0
Parker Township	East Eldorado Road Site 2	0173	2	Yes	Yes	Yes	No	10	No	Yes	No	1	0	0	0	0	Yes	0
Parker Township	East Eldorado Road Site 3	0174	0.5	Yes	No	No	No	2	No	No	No	0	1	1	0	0	No	0
Parker Township	Say Road	0175	0.5	No	No	No	No	0	No	No	No	0	4	3	0	0	No	0
Parker Township	Story Road	0177	0.5	No	Yes	Yes	No	15	No	No	No	0	0	0	0	0	No	0
Parker Township	West Eldorado Road	0171	2.5	No	Yes	Yes	No	0	No	Yes	No	1	0	0	0	0	Yes	0
Penn Township	Church Road	0115	0.5	No	Yes	Yes	No	4	No	No	No	0	0	0	0	0	No	0
Penn Township	Creek Road/Reamer Road	0114	2.5	No	Yes	Yes	No	75	No	Yes	No	0	0	0	0	0	No	0
Penn Township	Golden City Road	0034	1	No	Yes	Yes	Yes	0	No	Yes	Yes	0	0	0	0	0	No	0
Penn Township	S. Crisswell Road	0112	1	Yes	Yes	Yes	No	5	No	No	No	0	0	0	0	0	No	0
Penn Township	South Dutchtown Road	0111	1.5	Yes	Yes	Yes	No	25	No	Yes	No	3	0	0	0	0	Yes	0
Penn Township	Winters Road	0109	0.5	No	No	No	No	2	No	No	No	0	0	0	0	2	No	0
Penn Township	Woodland Road	0110	0.5	Yes	Yes	Yes	No	0	No	Yes	No	0	0	0	0	0	No	0
Slippery Rock Township	Forrester Road	0128	1.5	No	Yes	Yes	No	0	No	No	No	1	0	0	0	5	Yes	0
Slippery Rock Township	Miller Road	0127	1	No	No	No	No	0	No	Yes	No	0	0	0	0	0	No	0
Slippery Rock Township	Stoughton Road Site 1	0148	0.75	No	Yes	Yes	No	15	No	No	No	0	0	0	0	0	No	0
Slippery Rock Township	Stoughton Road Site 2	0149	0.5	Yes	Yes	Yes	No	0	No	No	No	0	0	0	0	0	No	0
Summit Township	Geibel Road	0168	1.5	Yes	Yes	Yes	No	6	No	Yes	No	0	0	0	0	0	No	0
Summit Township	Linwood Road	0203	1	Yes	Yes	Yes	Yes	23	No	Yes	No	0	0	0	1	0	No	0
Summit Township	Moran Road	0169	0.5	Yes	Yes	Yes	No	0	No	No	No	0	0	0	0	0	No	0
Summit Township	Portman Road	0167	0.5	No	No	No	No	15	No	No	No	0	0	0	0	0	No	0
Summit Township	Protzman Rd	0166	0.5	No	Yes	Yes	No	1	No	No	No	0	0	0	1	0	No	0
Summit Township	Stutz Road	0165	0.5	No	No	No	No	6	No	No	No	0	0	0	0	0	No	0

## Butler County IDS Waste Characteristics by Municipality \*

Municipality	Site Name	Site Number	Calculated Tons	Bagged Trash	Household Trash	Recyclables	HHW	Tires	Clean Fill	C and D Waste	Yard Waste	White Goods	Electronics	Televisions	Furniture	Mattresses	Vehicle Parts	Car Batteries
Venango Township	Cemetery Road	0188	2	No	Yes	Yes	No	2	No	No	No	0	0	0	0	0	Yes	0
Venango Township	Erico Road Site 1	0186	0.5	No	No	No	Yes	4	No	Yes	No	0	0	0	0	0	No	0
Venango Township	Erico Road Site 2	0187	1.5	No	Yes	Yes	No	2	No	No	No	0	0	0	0	0	Yes	0
Venango Township	Goff Station Road	0184	4	Yes	Yes	Yes	No	6	No	Yes	No	2	0	0	0	0	Yes	0
Venango Township	Heaven Lane	0122	0.5	No	Yes	Yes	No	0	No	No	No	0	0	0	2	0	No	0
Venango Township	Jamison Road Site 1	0119	0.5	No	Yes	Yes	No	0	No	No	No	0	0	0	0	0	No	0
Venango Township	Jamison Road Site 2	0120	1	Yes	Yes	Yes	No	5	No	Yes	No	2	0	0	0	0	No	0
Venango Township	Kelly Road	0121	1	Yes	Yes	No	Yes	0	No	Yes	No	2	0	0	0	0	Yes	0
Venango Township	Pison Road	0189	0.5	Yes	Yes	Yes	No	10	No	No	No	0	0	0	0	0	No	0
Washington Township	Bill Morris Road	0206	1	Yes	Yes	Yes	Yes	4	No	Yes	No	0	0	0	0	0	No	0
Washington Township	Branchton Road	0192	1	No	No	No	No	30	No	Yes	No	0	0	0	0	0	No	0
Washington Township	Cannel Coal Road	0215	0.5	No	No	No	No	20	No	No	No	0	0	0	0	0	No	0
Washington Township	Higgins Corner Road Site 1	0181	0.5	Yes	Yes	Yes	No	1	No	No	No	0	0	1	0	0	No	0
Washington Township	Higgins Corner Road Site 2	0190	1.5	No	Yes	Yes	No	18	No	No	No	1	3	3	1	0	No	0
Washington Township	Pleasant Valley Road	0191	0.5	Yes	Yes	Yes	No	3	No	Yes	No	0	1	1	0	0	No	0
Washington Township	Route 38	0179	10	No	No	No	No	500	No	No	No	0	0	0	0	0	No	0
West Liberty Borough	Church Road	0144	1.5	No	Yes	Yes	No	8	No	Yes	No	1	0	0	0	0	Yes	0
West Liberty Borough	Crolls Mill Road	0143	1	No	Yes	Yes	No	0	No	Yes	No	0	0	0	0	0	Yes	0
West Liberty Borough	Rhoer Road	0139	0.5	No	Yes	Yes	No	0	No	No	No	0	0	0	0	0	No	0
Winfield Township	Cornplanter Road	0102	0.5	No	Yes	No	No	4	No	No	No	0	0	0	0	0	No	0
Winfield Township	Gerner Road	0104	2	Yes	Yes	Yes	No	0	No	Yes	No	0	0	0	0	0	No	0
Winfield Township	Star Grill Road	0108	1	Yes	Yes	Yes	No	15	No	No	No	1	0	0	0	0	No	0
Winfield Township	Stoney Hollow Road	0067	2.5	Yes	Yes	Yes	Yes	6	No	Yes	No	0	4	4	0	0	Yes	0
Winfield Township	Winfield Road	0103	0.5	No	Yes	Yes	No	0	No	No	No	0	0	0	0	0	No	0
Worth Township	Barron Road	0147	0.5	No	Yes	Yes	No	0	No	No	No	1	0	0	0	0	No	0
Worth Township	Book Road Site 1	0221	1.5	No	No	No	No	3	No	No	No	0	2	2	2	1	No	3

## Butler County IDS Waste Characteristics by Municipality \*

Municipality	Site Name	Site Number	Calculated Tons	Bagged Trash	Household Trash	Recyclables	HHW	Tires	Clean Fill	C and D Waste	Yard Waste	White Goods	Electronics	Televisions	Furniture	Mattresses	Vehicle Parts	Car Batteries
Worth Township	Book Road Site 2	0222	2.5	Yes	Yes	Yes	Yes	40	No	Yes	Yes	0	5	5	5	1	Yes	0
Worth Township	Currie Road	0223	1.5	No	No	No	No	50	No	No	No	0	0	0	2	0	No	0
Worth Township	Dickey Road	0142	0.5	No	Yes	Yes	No	0	No	No	No	1	0	0	0	0	No	0
Worth Township	McCoy Road	0146	0.5	Yes	Yes	Yes	No	2	No	No	No	0	0	0	0	0	No	0
Worth Township	Reichert Road	0136	0.5	No	Yes	Yes	No	0	No	No	No	0	0	0	0	0	No	0
Worth Township	Roher Road	0137	0.5	No	Yes	Yes	No	3	No	No	No	0	0	0	0	0	No	0
Worth Township	Swope Road	0141	0.5	No	No	No	No	4	No	No	No	0	0	0	0	0	No	0
Worth Township	Taggart Road	0145	4	Yes	Yes	Yes	No	15	No	Yes	No	1	2	0	0	0	Yes	0
Worth Township	West Liberty Road	0138	1.5	Yes	Yes	No	No	0	No	Yes	No	1	0	0	1	0	No	0

**Total Number of Sites:**  **Total Tons:**

\* Characteristics assessed at time of survey were estimates based on what was visible.

## Illegal Dumpsite Characteristics Summary Chart by County

Dumpsite Characteristics	Allegheny	Butler	Columbia	Cumberland	Dauphin	Elk	Erie	Fayette	Greene	Indiana	Jefferson	Luzerne	Mercer	Northumberland	Washington
Total Sites Surveyed	202	217	39	37	139	79	83	163	49	114	67	159	143	125	126
Estimated Tons	344	317	382	132	478	119	121	736	450	680	541	1723	154	1634	317
<b>Location Demographics</b>															
Rural	15%	88%	100%	78%	61%	96%	71%	93%	100%	99%	100%	75%	99%	99%	100%
Suburban	70%	11%	0%	19%	16%	1%	16%	7%	0%	1%	0%	23%	1%	1%	0%
Urban	15%	<1%	0%	3%	23%	3%	13%	0%	0%	0%	0%	2%	0%	0%	0%
<b>Visible from Road</b>															
Yes	62%	60%	85%	46%	53%	71%	53%	73%	84%	53%	85%	59%	60%	62%	60%
No	11%	6%	2%	11%	10%	8%	27%	10%	8%	31%	15%	18%	13%	8%	27%
Partial	27%	34%	13%	43%	37%	21%	20%	17%	8%	16%	0%	23%	27%	30%	13%
<b>Distance from Waterway</b>															
In Waterway/Wetlands	24%	16%	13%	11%	10%	8%	21%	16%	8%	14%	12%	4%	13%	20%	6%
Near Waterway; within 100 feet	33%	56%	33%	43%	24%	50%	19%	40%	29%	54%	21%	17%	42%	54%	54%
No Waterway	43%	28%	54%	46%	46%	42%	60%	44%	63%	32%	67%	79%	45%	26%	40%
<b>Road Type</b>															
State	37%	3%	13%	11%	8%	23%	20%	24%	4%	4%	14%	32%	5%	16%	77%
Municipal/County	49%	97%	87%	89%	76%	66%	78%	72%	94%	90%	82%	32%	94%	50%	23%
Forest/Park	0%	0%	0%	0%	0%	7%	0%	0%	0%	0%	0%	0%	0%	0%	0%
Private/Undetermined	14%	0%	0%	0%	16%	4%	2%	4%	2%	6%	4%	36%	1%	34%	0%
<b>Terrain</b>															
Flat	52%	15%	23%	14%	46%	26%	45%	32%	22%	25%	54%	40%	55%	31%	48%
Gently Sloped	22%	29%	41%	32%	20%	37%	22%	17%	29%	20%	25%	32%	20%	29%	43%
Medium Sloped	14%	33%	23%	32%	9%	23%	14%	21%	27%	28%	9%	17%	18%	18%	7%
Steep	12%	23%	13%	22%	25%	14%	19%	30%	22%	27%	12%	11%	7%	22%	2%

## Butler County Illegal Dumpsite Survey Acknowledgements

Produced by PA CleanWays

Kurt Speicher, Surveyor, PA CleanWays of Butler-Lawrence Counties

Jerry Zona, Executive Director, PA CleanWays of Butler-Lawrence Counties

Andrew Aurand, University Center for Social and Urban Research, University of Pittsburgh

A special thanks to the rest of the PA CleanWays staff for their various contributions of report design, data management, and editing.

**This report was produced in part with funding through:**

**An Anonymous Funder**



### **PA CleanWays**

105 West Fourth Street, Greensburg, PA 15601  
Phone: 724-836-4121 • Toll Free: 877-772-3673  
Fax: 724-836-1980 • [www.pacleanways.org](http://www.pacleanways.org)